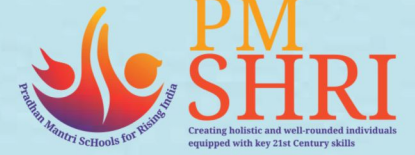




शिक्षा मंत्रालय
MINISTRY OF
EDUCATION

सत्यमेव जयते



PM SHRI - NEP 2020

EXEMPLAR SCHOOLS



Department of School Education & Literacy, Ministry of Education, Government of India



The National Education Policy has transformed the education sector in the recent years. I am certain that the PM-SHRI schools will further benefit lakhs of students across India in the spirit of NEP.

- Narendra Modi
Prime Minister

FOREWORD

It is with great pleasure and pride that we introduce this coffee table book, a compilation of the best practices stemming from the PM SHRI Schools scheme.

The coffee table book on best practices from states and Union Territories is a testament to the remarkable strides taken in schools across our diverse nation. It serves as a celebration of the vision and commitment of stakeholders who have wholeheartedly embraced the call of PM SHRI schools to document, share, and institutionalize these practices for the benefit of students nationwide.

At its core, this book transcends being merely a collection of success stories; it epitomizes the power of collaboration and collective learning in the field of education. By facilitating the exchange of knowledge and experiences, this endeavour seeks to foster collaboration and learning among schools, educators, and stakeholders in the education sector. It exemplifies the spirit of unity and shared purpose that defines our efforts to elevate the standards of education in our country.

On behalf of the Department of School Education and Literacy, we extend our deepest gratitude to all the states and Union Territories, schools, educators, and students who have generously contributed their stories and practices to this book.

We hope that this coffee table book inspires and motivates readers to join us in our quest to transform education and build a brighter future for generations to come.

MESSAGE



It brings me great pleasure to share with you this unique document showcasing the best practices in the PM SHRI Schools. PM SHRI Schools have been envisioned to serve as exemplar institutions that embrace every aspect of the National Education Policy (NEP) 2020. These schools will provide high-quality education to nurture the cognitive and holistic development of students while striving to create well-rounded individuals with 21st-century skills.

Furthermore, these schools will address and foster an equitable, inclusive, and joyful learning environment that caters to children's varied backgrounds, multilingual needs, and varying academic abilities, empowering them to be active participants in their own education, in line with the goals of NEP 2020.

The insights gained by these schools from their experiences over time will not be confined within their walls; rather, they will be utilized to elevate educational standards across the country. We aim to ensure that every school in India learns from the experiences gained under the PM SHRI Schools program. I am pleased to commend most of the States and Union Territories for their multiple creative inputs under this program, demonstrating their commitment and ingenuity in raising the standard of education throughout India. From implementing cutting-edge teaching methodologies to creating conducive learning environments, their tireless efforts are shaping the future of our nation.

I wish to take this opportunity to congratulate all the stakeholders who have contributed to making this program a reality. Let us create and instill a culture of innovation and entrepreneurship in our education system, starting from the school level itself, through engaging processes. Together, we can build a nation where every child's potential becomes a reality and their aspirations are achieved in building a Viksit Bharat.

My Best Wishes!

Dharmendra Pradhan
*Minister of Education,
Government of India*

MESSAGE



I am pleased to present this comprehensive report on the PM SHRI Schools scheme, a testament to our unwavering commitment to fostering holistic development and instilling 21st-century skills in our future generations. These schools epitomize excellence and serve as benchmarks for educational institutions across the nation.

The overarching goal of PM SHRI schools extends beyond mere cognitive development; it aspires to cultivate well-rounded individuals equipped with the skills necessary to thrive in the dynamic landscape of the 21st century. By embracing the principles outlined in the National Education Policy 2020, these schools are dedicated to nurturing lifelong learners who possess the resilience and adaptability to navigate the challenges of the modern world.

I am proud to acknowledge the efforts of states and union territories in implementing various initiatives within the PM SHRI Schools, thereby ensuring the realization of our collective vision for a progressive and inclusive society. Their dedication and commitment are commendable, and I extend my heartfelt congratulations to them for their exemplary efforts.

As we celebrate the achievements of PM SHRI Schools and reflect on their significant contributions to our educational framework, I am confident that they will continue to serve as beacons of excellence, inspiring generations to come.

My Best Wishes!

Sanjay Kumar
Secretary, Ministry of Education



CONTENT

The PM SHRI Scheme: An Introduction	8 - 9
Pillars Supporting The PM SHRI Scheme	10 - 11
Andaman & Nicobar	12 - 13
Andhra Pradesh	14 - 15
Arunachal Pradesh	16 - 17
Assam	18 - 19
Chandigarh	20 - 21
Chhattisgarh	22 - 23
DNH & DD	24 - 25
Goa	26 - 27
Gujarat	28 - 29
Haryana	30 - 31
Jammu & Kashmir	32 - 33
Karnataka	34 - 35
Ladakh	36 - 37
Lakshadweep	38 - 39

Madhya Pradesh	40 - 41
Maharashtra	42 - 43
Manipur	44 - 45
Meghalaya	46 - 47
Mizoram	48 - 49
Nagaland	50 - 51
Puducherry	52 - 53
Rajasthan	54 - 55
Sikkim	56 - 57
Telangana	58 - 59
Tripura	60 - 61
Uttar Pradesh	62 - 63
Uttarakhand	64 - 65
Navodaya Vidyalayas	66 - 67
Kendriya Vidyalayas	68 - 69
Trending Tweets on #PMSHRI	70 - 71
Testimonials	72 - 73





THE PM SHRI SCHEME AN INTRODUCTION



As we endeavour to construct an education system capable of navigating the complexities of an increasingly unpredictable, dynamic, and non-linear world, the resilience of the school ecosystem becomes paramount. The PM SHRI schools are meticulously crafted with this objective in mind. Designed to embody the principles outlined in the National Education Policy 2020, these schools are poised to emerge as exemplars of educational excellence.

In addition to showcasing the successful implementation of NEP 2020, PM SHRI schools are envisioned to serve as beacons of leadership within their respective regions. They are committed to delivering high-quality education within an equitable, inclusive, and joyous school environment. By embracing the diverse backgrounds, multilingual needs, and varying academic abilities of students, these schools strive to empower children to become active participants in their own learning journey.



Furthermore, PM SHRI schools operate within a framework that incentivizes results and encourages continuous improvement. Through a meticulously tracked funding mechanism tied to stringent quality parameters, schools are motivated to consistently deliver outstanding outcomes, thereby ensuring the holistic development and academic success of every student.



PILLARS SUPPORTING THE PM SHRI SCHEME



PILLAR 1: CURRICULUM PEDAGOGY, AND ASSESSMENT

The focus of PM SHRI schools' curriculum, teaching methods, and evaluation processes is to empower students with autonomy and purpose, emphasizing the development of skills over rote learning. The goal is to promote interactive teaching and enjoyable, creative, collaborative, and exploratory classroom experiences.



PILLAR 2: ACCESS AND INFRASTRUCTURE

PM SHRI schools aim to create an inclusive learning environment accessible to all students, ensuring safety, inclusivity, and effectiveness. This involves upgrading existing schools, establishing new ones in underserved areas, and providing safe transportation, especially for girls, along with hostel facilities to ensure access to quality education for all.



PILLAR 3: HUMAN RESOURCES AND SCHOOL LEADERSHIP

Given the evolving nature of education, it's crucial to continually train teachers in the latest curriculum, teaching methods, and assessments. This pillar focuses on enabling PM SHRI schools to support teachers through training and development programs to enhance their effectiveness. Additionally, it emphasizes the importance of strong school leadership for improving educational quality.



PILLAR 4: INCLUSIVE PRACTICES AND GENDER EQUITY

PM SHRI schools strive to create physically and psychologically safe environments for all students, which significantly impact their motivation and attitudes. This pillar aims to ensure excellence in inclusive practices and gender equity within PM SHRI schools.



PILLAR 5: MANAGEMENT, MONITORING, AND GOVERNANCE

Effective management, monitoring, and governance systems are essential for assessing the impact of school transformations. This pillar emphasizes the need for robust systems to evaluate the alignment with existing schemes, resource management, and overall effectiveness of PM SHRI schools.



PILLAR 6: BENEFICIARY SATISFACTION

The quality of PM SHRI schools should be evaluated based on the satisfaction and effectiveness of various stakeholders involved in the education system, including principals, teachers, students, parents, and the community. This pillar provides guidelines to ensure their roles and responsibilities converge effectively for school transformation.



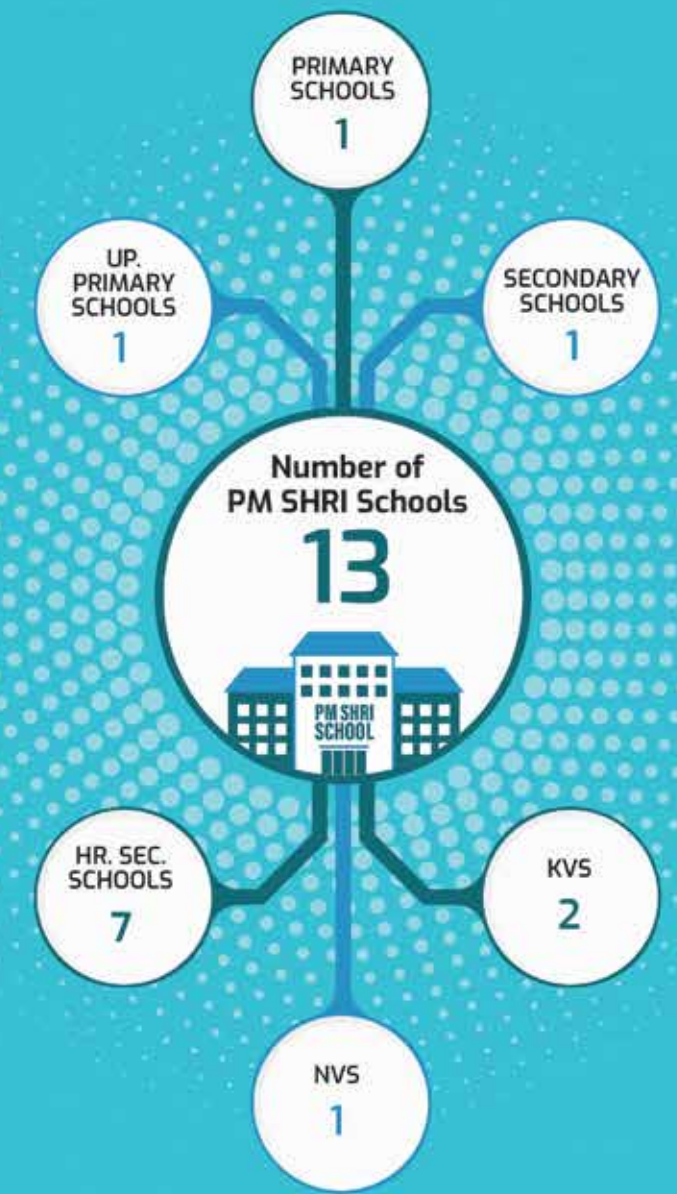
ANDAMAN & NICOBAR

Efforts to enhance education in the Andaman and Nicobar Islands are gaining momentum through the PM SHRI scheme. This scheme has breathed new life into the educational landscape by revamping the school system and introducing engaging learning methodologies, the introduction of play-based learning materials, catering to children aged 3-8 years. These materials cover various subjects and aim to make education a fun and immersive experience for young learners. The recent participation of students from PM SHRI GSSS Bambooflat in an event featuring the "Jaadui Pitara" exemplifies the effectiveness of this approach.

The Jaadui Pitara not only enriches academic learning but also fosters holistic development across multiple domains, including physical, socio-emotional, cognitive, language, and aesthetic-cultural aspects. It goes beyond traditional academic achievements, focusing on empowering children with essential life skills.

Students' enthusiasm for indulging in learning-teaching materials reflects their engagement and enjoyment in the process. By presenting complex concepts in a fun-loving language, the initiative ensures that learning is not just effective but also enjoyable.

In summary, the integration of play-based learning materials within the PM SHRI scheme is instrumental in creating a conducive learning environment that nurtures well-rounded individuals equipped for success in school, community, and life.



Cultural cum Educational tour was organized for the students to BalidhanVedi, Organic Farm Sippighat & Science Centre to inculcate scientific temperament, environmental, cultural & historical awareness of Andaman & Nicobar Islands



Students of PM SHRI GSSS Bambooflat participated in a play based learning event and learned so many new things about the Jaadui Pitara

ANDHRA PRADESH



Field visit to local areas of interest and historical importance by primary students in PM SHRI schools, Andhra Pradesh



Students are engaging in pottery workshop to get hands-on experience making pots from local artisans

Within the inclusive educational framework of PM SHRI schools, a cornerstone is the integration of children with special needs into mixed-ability classrooms, promoting an environment where every child can thrive. Vibrant learning aids are provided to children with special needs, enhancing their concentration and facilitating comprehension. Special education teachers conduct play-based activities during dedicated classes for children with special needs, fostering improved understanding and communication. Remarkably, these children seamlessly blend into regular classroom settings.

The overarching goal is to offer every child the opportunity to realize their academic, social, emotional, and physical potential, creating a welcoming and conducive atmosphere for effective learning.

In addition to this, students' perceptions are transformed through exposure visits, where learning unfolds through real-world observation and interaction. In one such adventure, secondary students explored the carriage repair unit of a railway wagon in Vijayawada. This hands-on encounter illuminated the extensive efforts undertaken in wagon workshops to ensure the seamless operation of countless trains daily. Such field trips not only impart practical knowledge but also cultivate a deeper connection between students and their surroundings, shaping well-rounded individuals ready to navigate the complexities of the world.



Students are participating in the Meri Mati Mera Desh campaign as the culminating event of Azadi ka Amrut Mahotsav

Number of Districts

26



Number of Blocks

668



Number of PM SHRI Schools

697

PRIMARY SCHOOLS
13

UP. PRIMARY SCHOOLS
20

SECONDARY SCHOOLS
511

HR. SEC. SCHOOLS
118

KVS
22

NVS
13



ARUNACHAL PRADESH

In Arunachal Pradesh, the PM SHRI Schools are actively addressing the state's diverse socio-economic landscape and educational requirements. These schools embrace a holistic approach to education, catering to the multifaceted needs of students.

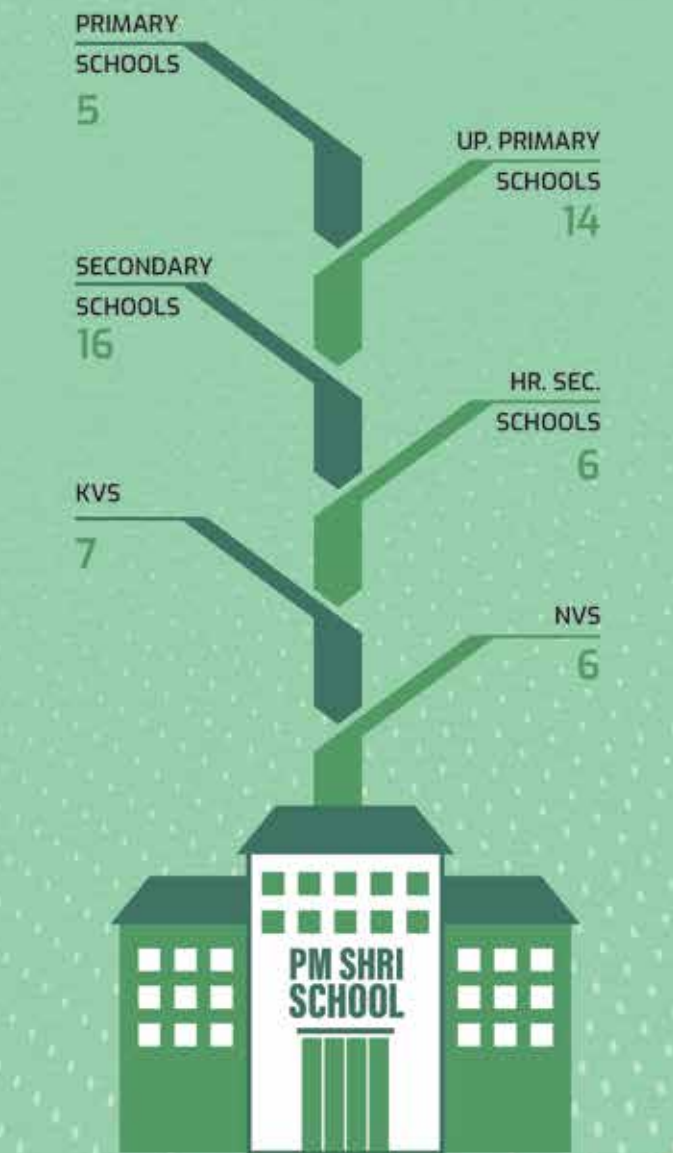
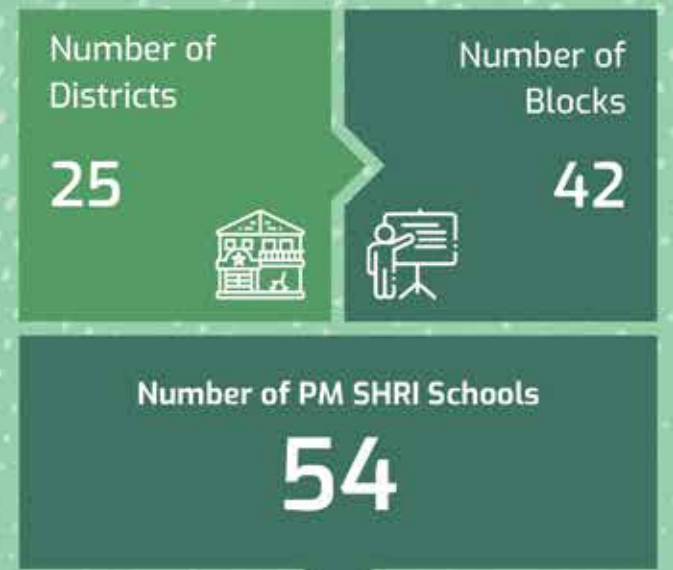
To foster holistic development, a rejuvenating Yoga Camp was organized within the tranquil confines of a PM SHRI School. The event witnessed enthusiastic participation from senior girl students, emphasizing a growing interest in activities promoting physical and mental well-being. The camp's success was evident in its ability to invigorate participants physically and equip them with invaluable tools for enhancing mental resilience. By bolstering concentration through meticulously curated sessions, students were better equipped to navigate academic pursuits with heightened focus, fostering an environment conducive to academic excellence.

Furthermore, under the leadership of Junari Miso (SHG), a craft and skill training program was conducted at PM SHRI School. This initiative aimed to develop students' proficiency in craft making, empowering them with practical skills while fostering self-reliance. By encouraging students to sell their crafts, albeit in a small way, the program not only engaged them in productive endeavors but also instilled a sense of entrepreneurship within the young minds.



A craft and skill training was organized in the PM SHRI KGBV Dambuk under

the leadership of Junari Miso (SHG) to make the students skilful in craft making.



ASSAM

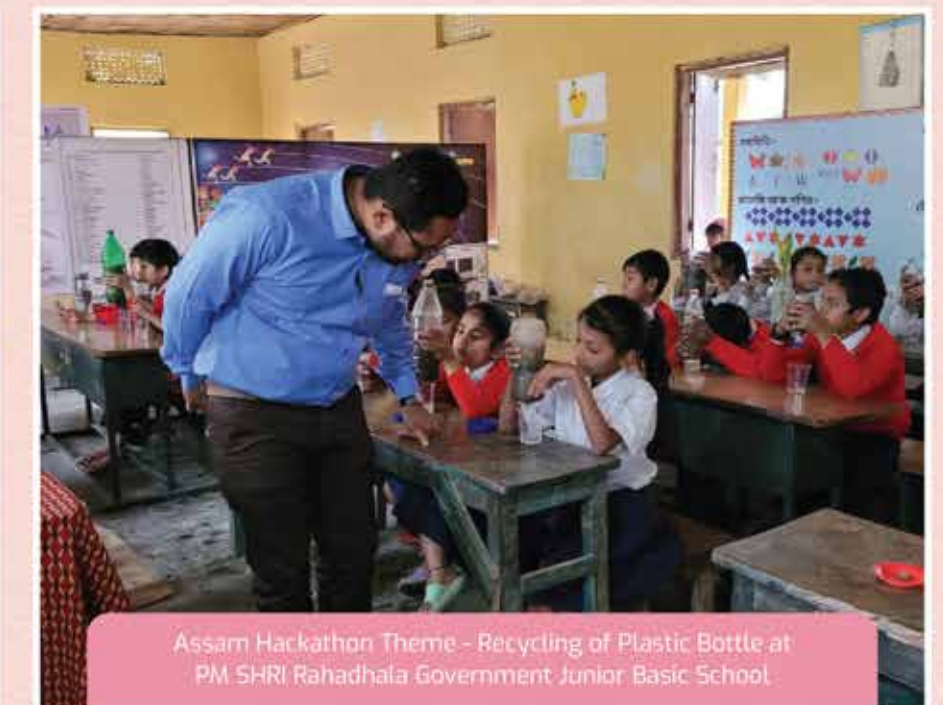
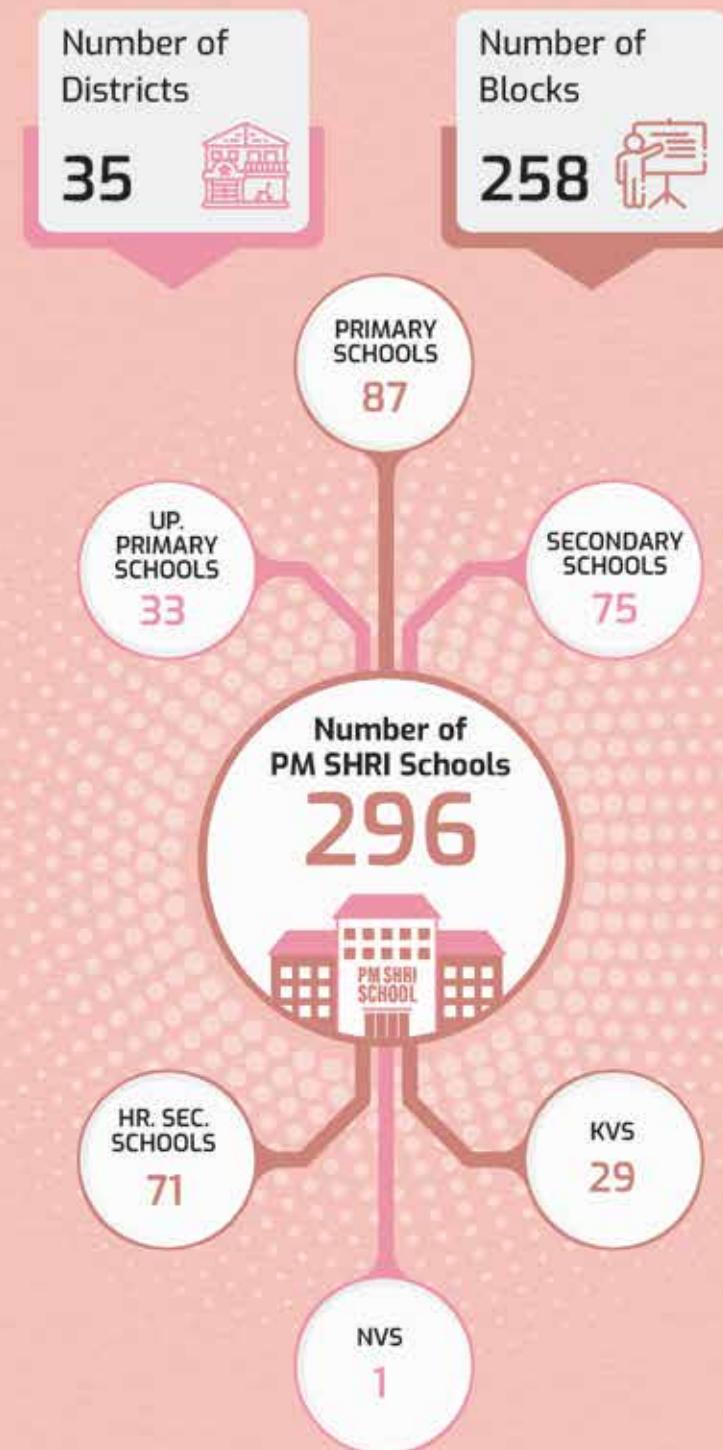
In the verdant landscape of Assam, the PM SHRI schools are painting an indelible picture of holistic development and experiential learning. Across the state, PM SHRI schools have become beacons of innovation, embracing a comprehensive approach that transcends traditional academics.

This educational renaissance is fuelled with a commitment to nurture both the body and the mind. Through regular yoga sessions, students embark on a journey of self-discovery, finding harmony between physical fitness and mental well-being. These practices lay the foundation for a balanced life, equipping young minds with resilience and inner peace.

In these PM SHRI schools education extends far beyond the classroom walls. In collaboration with local artisans, students delve into the rich tapestry of Assamese culture through hands-on pottery workshops. These encounters not only spark creativity but also serve as a testament to the preservation of traditional crafts, ensuring their legacy for generations to come.

In a rapidly changing world, Assam's schools are preparing students for the challenges of tomorrow. International mentorship programs foster a spirit of innovation and entrepreneurship, empowering young leaders to navigate global landscapes with confidence. Moreover, initiatives like mental health camps and career planning sessions prioritize students' well-being, laying the groundwork for a prosperous future.

As stewards of the environment, students engage in activities that cultivate a sense of responsibility towards the planet. From plant adoption drives to excursions to renowned institutions like IIT Guwahati, where they witness cutting-edge technology in action, these experiences broaden their horizons and inspire a deeper connection to the world around them.

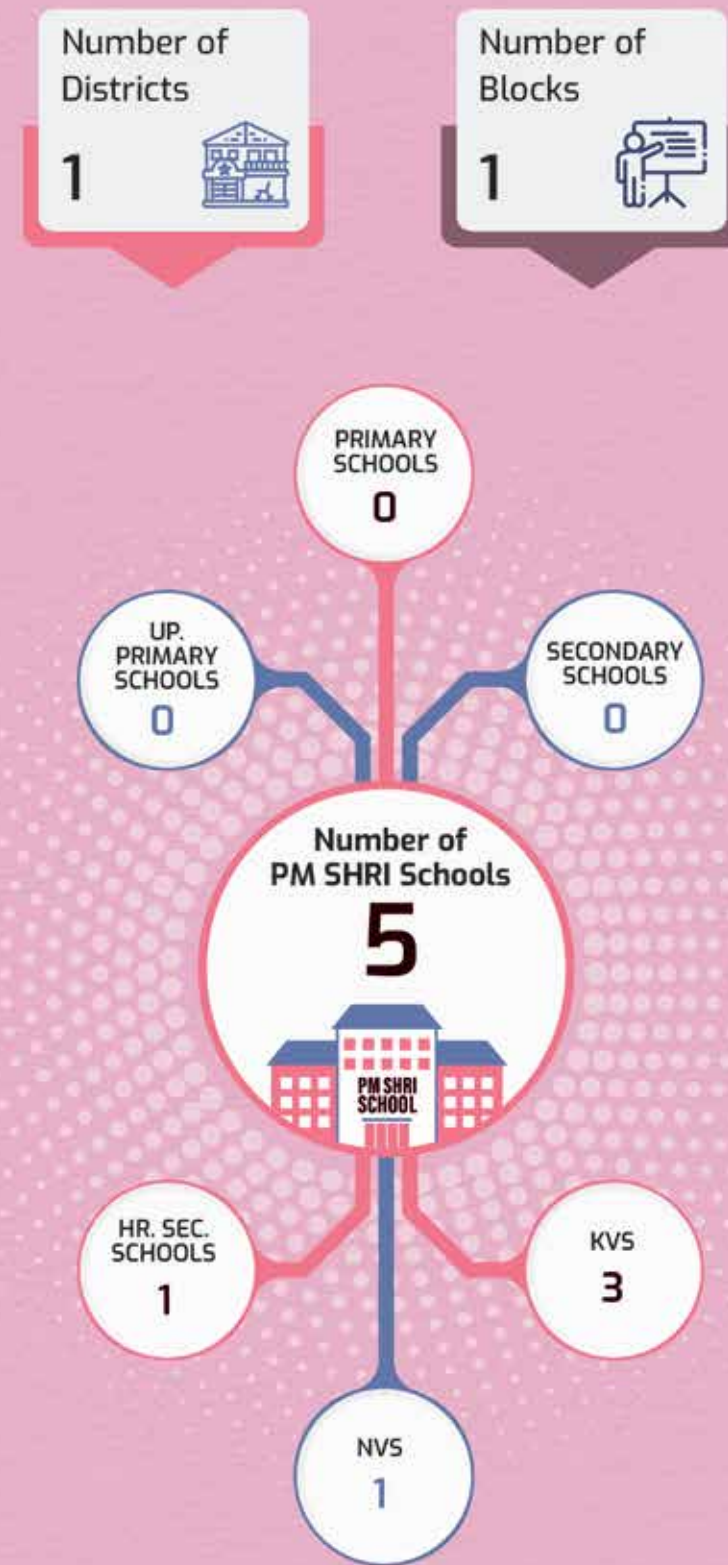


CHANDIGARH

The Language Festival held at PM SHRI schools in Chandigarh epitomized a celebration of linguistic diversity and cultural richness, aiming to cultivate a love for literature and an appreciation for India's myriad languages. With fervor and zeal, both students and teachers embraced the event, championing the ethos of 'Unity in Diversity'. Spanning a vibrant week of activities, the festival served as a platform for students to hone their reading skills and immerse themselves in the beauty of language. From poetry recitations to storytelling sessions, every facet of the festival was meticulously crafted to engage and inspire.

Beyond the tangible displays, the Language Festival fostered intangible connections, fostering a sense of belonging and mutual respect among participants. It served as a poignant reminder of the richness inherent in India's linguistic tapestry and the power of language to unite and empower.

In essence, the Language Festival at PM SHRI schools in Chandigarh was not just an event but a testament to the transformative potential of literature and the enduring spirit of cultural exchange.



PM SHRI School celebrates diversity through Language Festival in Chandigarh



Students of PM SHRI School, Chandigarh, exhibit their diverse learnings and talents



Students showcasing their creative brilliance in language festival through costumes and models

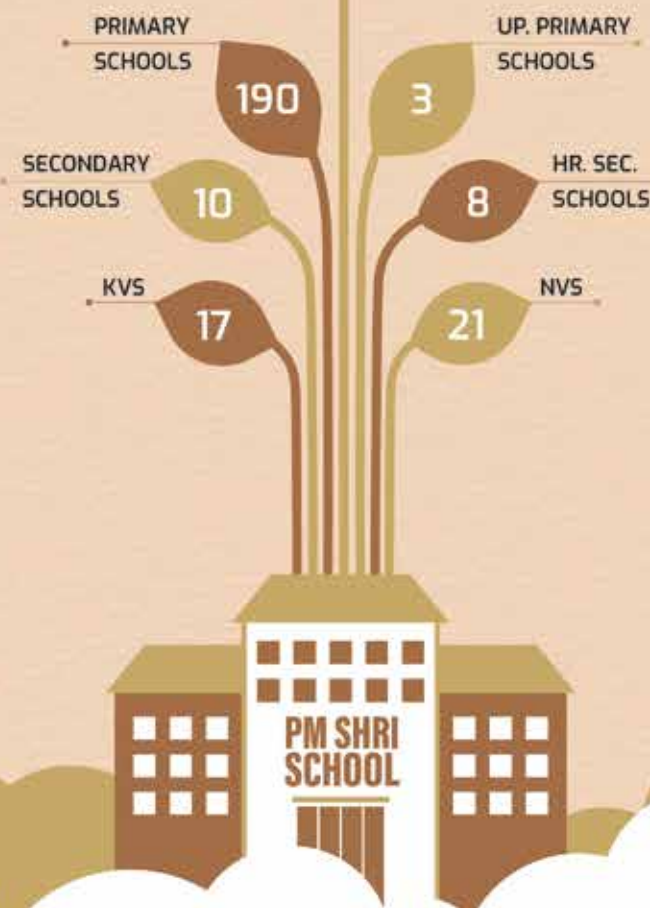
CHHATTISGARH

Number of Districts
33

Number of Blocks
218

Number of PM SHRI Schools

249



Within Chhattisgarh's PM SHRI Schools, the National Avishkar Abhiyan has sparked a wave of exploration among students, igniting their passion for mathematics, science, and technology through exposure visits. These visits have unveiled the innovative experiments conducted in Chemistry, Physics, and Biology laboratories, showcasing the budding scientific prowess of the students.

The career counseling sessions have illuminated the diverse pathways available to students, offering personalized guidance to match individual strengths with suitable professions. Through such counseling, students have gained clarity on their career trajectories, empowering them to make informed decisions about their future.

The PM SHRI Schools have spearheaded the Green School program, fostering eco-consciousness through hands-on initiatives like tree planting, cultivating kitchen gardens, and implementing colorful waste segregation systems. These endeavors instill a sense of environmental responsibility in students, nurturing a generation committed to sustainability.

Furthermore, physical fitness has been prioritized through demonstrations of physical exercises and training sessions. By engaging in structured physical education, students hone their motor skills and enhance their overall well-being, laying the foundation for a healthy lifestyle.

In a holistic approach to student welfare, health check-up camps have been established to monitor and safeguard the health of students. These camps not only promote physical well-being but also create a nurturing environment conducive to learning and growth.



Teachers utilize audio-visual tools to interact with students in smart classrooms at PM SHRI Schools, Chhattisgarh



Students delve into jaggery production at a local center



Students immerse in the art of craftwork, embracing creativity and skill

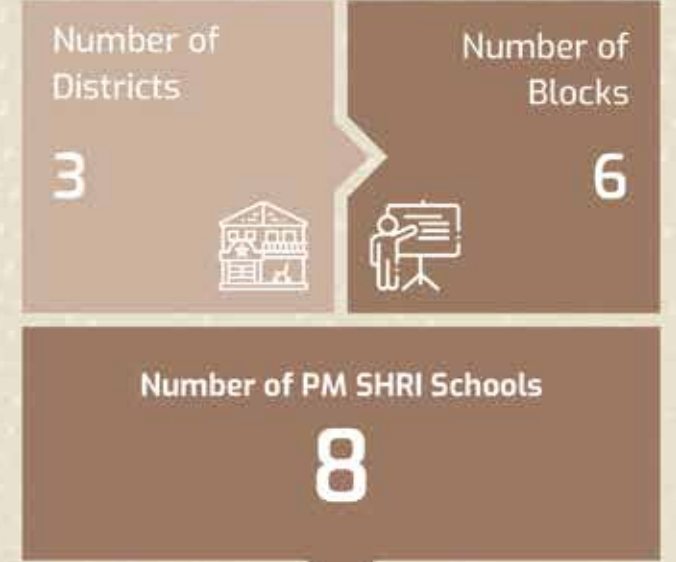
DNH & DD



Enthusiastic participation from students across various grades, each contributing to the Food Fair with dishes that reflected different cultures, historical periods, and social practices



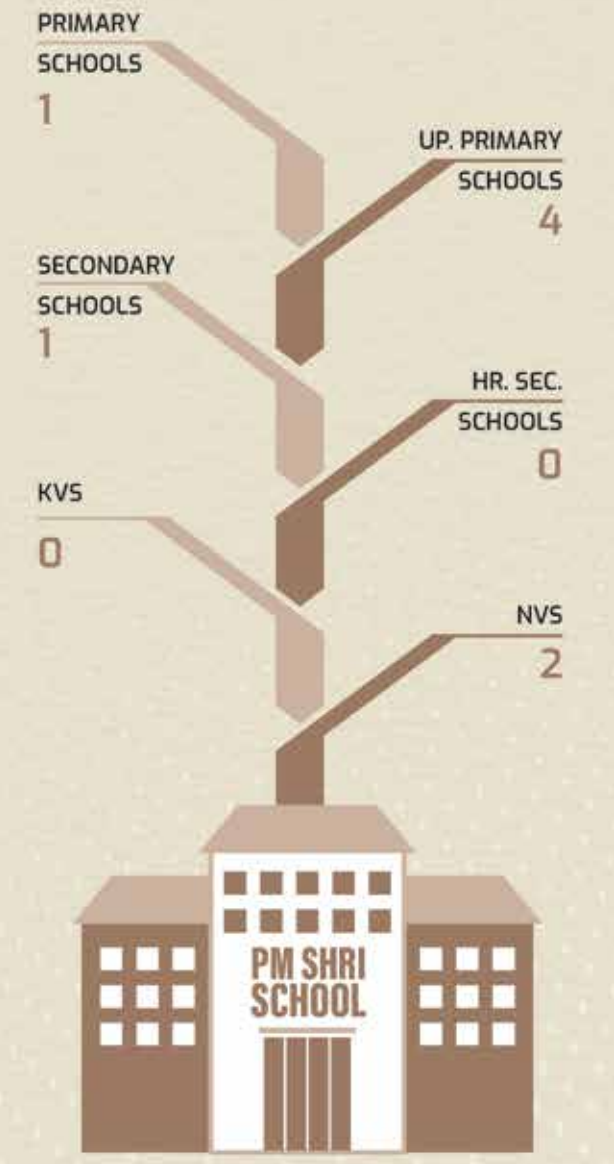
Visit to Ambuja Cement Factory, Somnath Temple, Science City, Akshardham Temple, Haji Dam and Water Park, each of which played a crucial role in broadening the students understanding of Social Science



Visit to the Post Office organized by PM SHRI Govt. Primary English Medium School, Ghoghla, to provide students with practical insights into the functioning of postal services and the role of the Post Office in facilitating communication and logistics

PM SHRI schools prioritize student safety through 'good touch, bad touch' 'SPARSH KI PATHSHALA' sessions, fostering a secure learning environment. These sessions sensitively educate students on recognizing inappropriate physical contact, empowering them to protect themselves. By addressing such crucial topics, these schools not only comply with child protection norms but also contribute to holistic education, ensuring emotional well-being. Empowering students with knowledge and awareness promotes a culture of safety, trust, and open communication within the school community.

The educational visits to SBI and the Post Office in PM SHRI schools serve vital purposes by imparting practical insights and bridging theoretical knowledge gaps. These excursions prioritize enhancing understanding of banking processes and postal services. SBI visits provide comprehensive overviews of different bank departments, fostering a multifaceted comprehension of financial operations. Interactive sessions with SBI representatives emphasize key banking concepts and financial literacy, connecting classroom learning with real-world applications. Simultaneously, visits to the Post Office offer students firsthand experiences in mail processing, civic awareness, and potential career exploration in postal sectors. By integrating such educational excursions, PM SHRI schools effectively cultivate a holistic learning environment, aligning theoretical knowledge with practical experiences for students' comprehensive development.

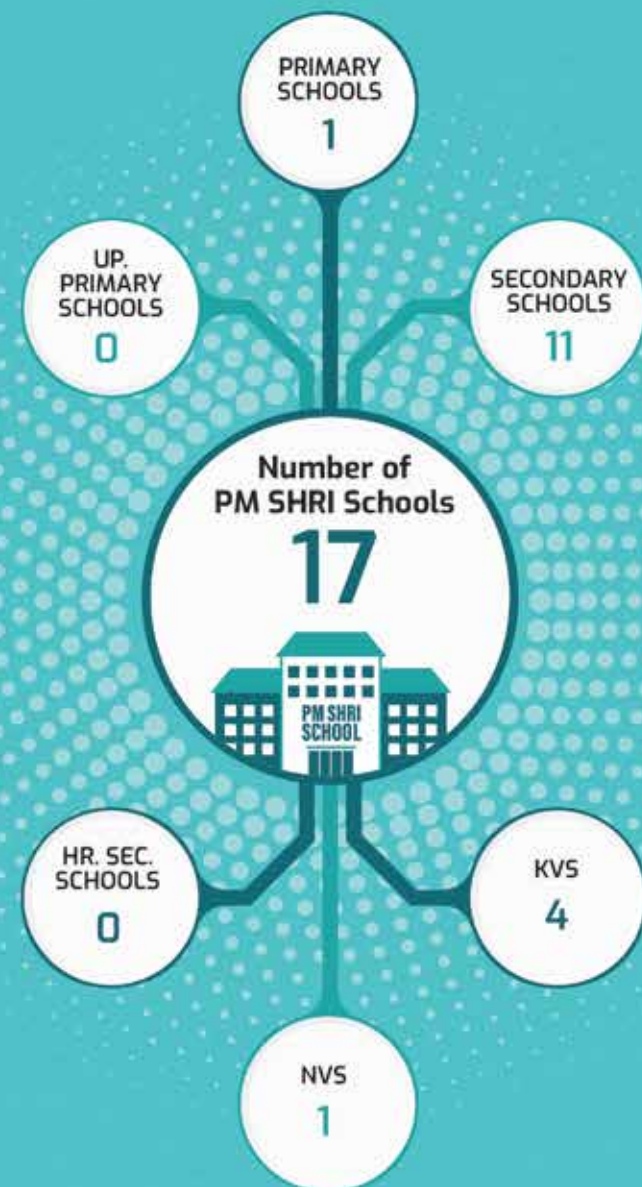


GOA

PM SHRI, with its transformative vision for education, is poised to revolutionize the educational system in Goa. The agenda of PM SHRI is meticulously designed to tackle key challenges and unlock the full potential of youth through inclusive, quality, and innovative education. In Goa, 17 PM SHRI schools have already been established, with plans for further expansion in the next phase.

One notable initiative under PM SHRI is Goa International Robotic festival Under Innovation with the focus on innovation, aiming to cultivate problem-solving skills and inspire careers in STEAM fields. Students at PM SHRI schools in Goa recently built a robot using a reusable platform and Java-based programming, showcasing their talent and fostering personal and professional growth through teamwork and leadership development.

Additionally, PM SHRI schools in Goa have embraced practical learning by conducting paddy cultivation activities within the school premises since June 2023. This initiative has seen enthusiastic participation from students, staff, and parents, highlighting the educational benefits of engaging in sustainable farming practices. Such activities not only enrich students' educational experiences but also instill values of environmental stewardship and global citizenship, preparing them for a brighter future.



PM SHRI school conducted paddy cultivation activity in the school premises which began in June 2023. Students, teachers and parents took participation in this novel activity



Under the INNOVATION activity (organised under PM SHRI scheme), Robots were built from a reusable platform, powered by Android technology, using a variety of levels of Java-based programming by the students

GUJARAT



Students from PM SHRI School in Sankheshwar (Gujarat) participating in activities during the Maths-Science exhibition

Number of Districts 33	Number of Blocks 278
Number of PM SHRI Schools 312	

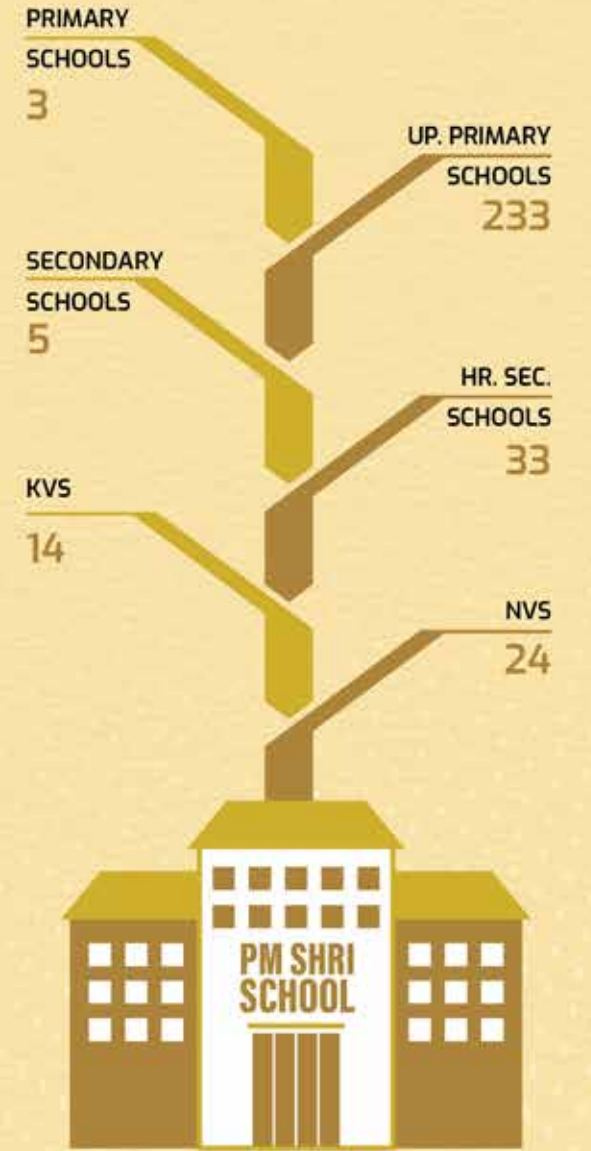


PM SHRI Ramlechi Pra Shala, Gir Somnath (Gujarat) students expressing their various emotions, as part of the self-awareness initiatives

In the vibrant PM SHRI Schools of Gujarat, every day is an opportunity for self-discovery and empowerment. The schools hosted spectacular Maths & Science Exhibitions that showcased the brilliance of its students. With 41 innovative models spanning a myriad of scientific and mathematical concepts, young minds from grades 6 to 8 captivated audiences with their ingenuity and creativity. This exhibition not only provided a platform for students to exhibit their talents but also ignited a spirit of curiosity and inquiry among peers and older visitors alike.

The PM SHRI Schools also commemorated Girl Child Day with a series of empowering activities. On January 24th, 2024, the campus buzzed with excitement as young girls engaged in sessions aimed at understanding and expressing their emotions. As part of the self-awareness initiatives, students shared their various emotions through expressive activities, fostering emotional intelligence and self-awareness.

These efforts were not just about celebrating the significance of the girl child but also about nurturing holistic development and well-being among all students. Through initiatives like these, PM SHRI Schools continue to pave the way for a brighter, more inclusive future where every child has the opportunity to thrive and shine.

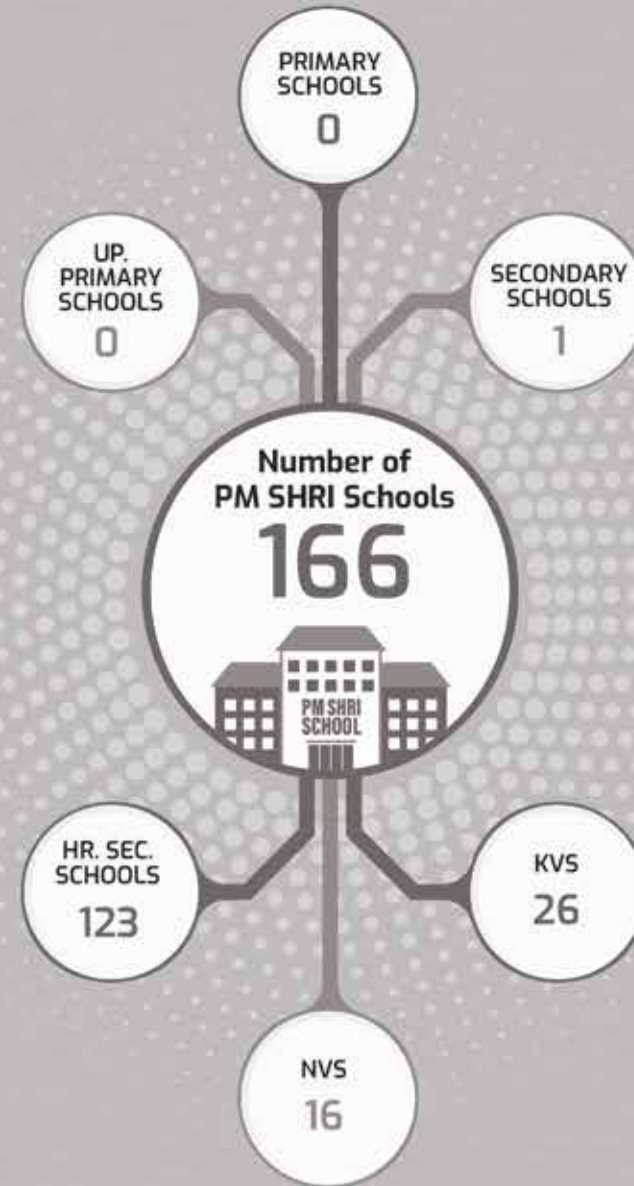


HARYANA

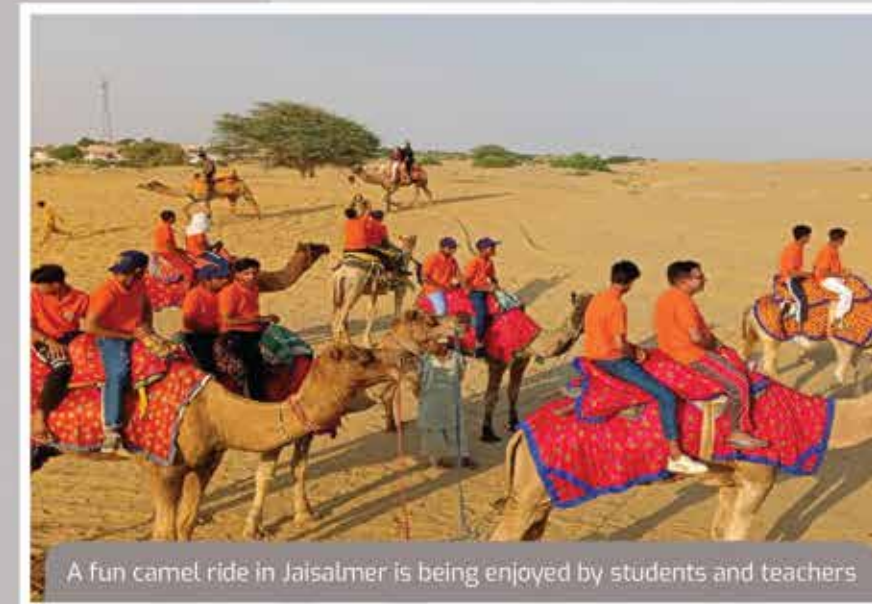
Within the realm of PM SHRI schools in Haryana, Adventure and Nature Study Camps unfold as chapters of holistic growth and exploration. The core objective is to propel students toward comprehensive development, enabling the realization of their physical, intellectual, social, emotional, and spiritual potentials. Beyond academic pursuits, these camps become crucibles for character building, leadership cultivation, and values-driven personality development.

Against the diverse backdrop of Haryana, students immerse themselves in Himalayan nature study camps, coastal explorations, and desert and plateau adventures. Activities such as rock climbing, trekking, river-crossing, and the fundamentals of mountaineering blend seamlessly with studies on marine life, coastal and desert lifestyles, and vegetation. The curriculum extends further to include disciplines like rifle shooting, pistol shooting, and archery, ensuring a well-rounded skill set.

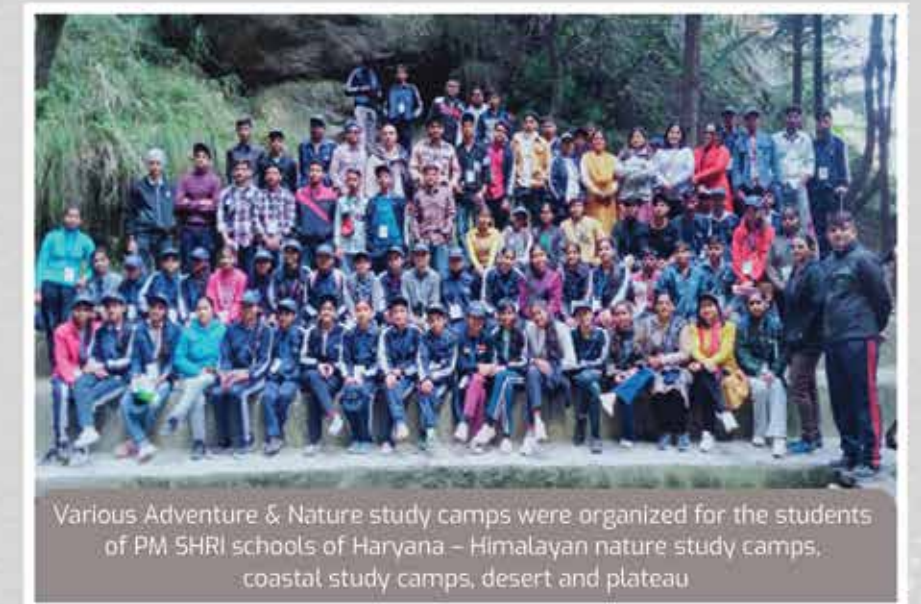
More than mere outdoor escapades, these camps serve as transformative experiences. Students emerge not just physically adept but also imbued with a deep sense of responsibility and citizenship. Equipped with resilience and adaptability, they are prepared to navigate life's challenges, making these chapters in their educational journey vibrant stories of self-discovery and connection to the natural world.



A PM SHRI school student is having fun while practicing archery



A fun camel ride in Jaisalmer is being enjoyed by students and teachers



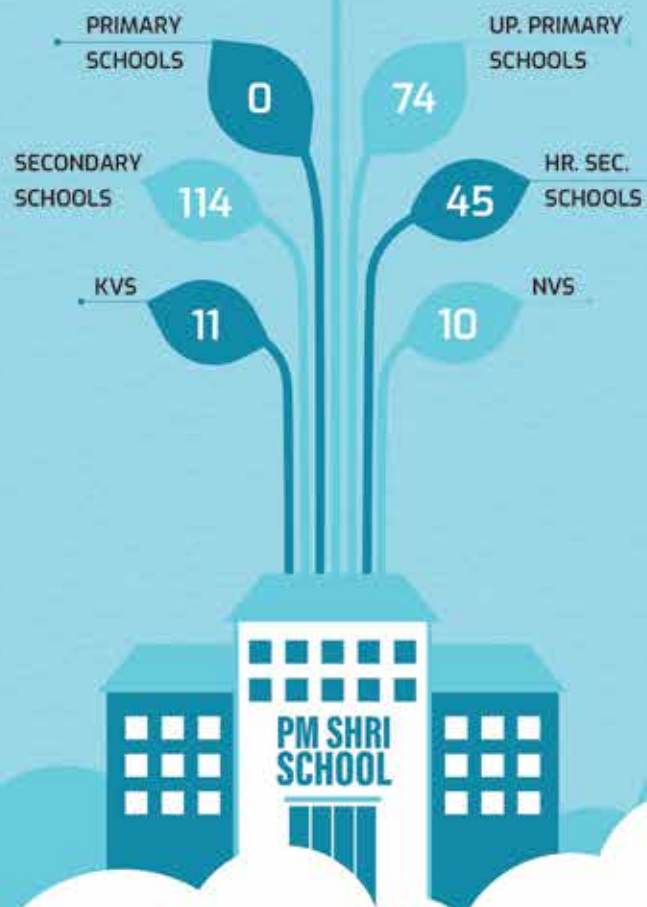
Various Adventure & Nature study camps were organized for the students of PM SHRI schools of Haryana – Himalayan nature study camps, coastal study camps, desert and plateau

JAMMU & KASHMIR

Number of Districts
20

Number of Blocks
234

Number of PM SHRI Schools
254



In the heart of J&K PM SHRI School's ethos lies a reflective dedication to shaping well-rounded individuals, evident through the establishment of National Cadet Corps (NCC) and National Service Scheme (NSS) units. These units symbolize the institution's unwavering commitment to nurturing qualities of leadership, discipline, and community service in its students, creating a foundation for their holistic development.

Beyond the classroom, the school actively involves crucial stakeholders such as parents and community members in a tapestry of community engagement activities. From the vibrant rhythms of local folk programs to the transformative impact of Swachh Bharat Cleanliness drives and impactful rallies against drug abuse, the school stands at the forefront of initiatives addressing societal challenges. Collaborative endeavours with the District Administration, including "Meri Maati Mera Desh" and "My School My Pride," serve as poignant expressions of shared pride and collective responsibility.

Cultural celebrations like the Local Cuisine Festival become canvases for the expression of shared traditions, while awareness programs and community service initiatives amplify the school's commitment to addressing societal needs. At its core, the institution endeavours to instill in its students a profound sense of responsibility and citizenship, cultivating individuals who are not only academically proficient but also compassionate leaders actively engaged in bettering their communities. This encapsulates the essence of the school's journey towards holistic education and community enrichment.



The presence of National Cadet Corps (NCC) and National Service Scheme (NSS) units at the school demonstrates its commitment to fostering qualities of leadership, discipline, and community service among students



The girls at PM SHRI Government Girls Higher Secondary School demonstrated exceptional athleticism, securing numerous victories & 1st prize in U-17 & U-19 district and National level Volleyball tournaments, Kho-Kho, Kabaddi, etc.



Different community engagement activities like local folk programs, Swachh Bharat Cleanliness drive, Rallies on No Drug campaign, Jan Bhandari, etc. are practiced in schools to involve important stakeholder in the education space including the parents, community members

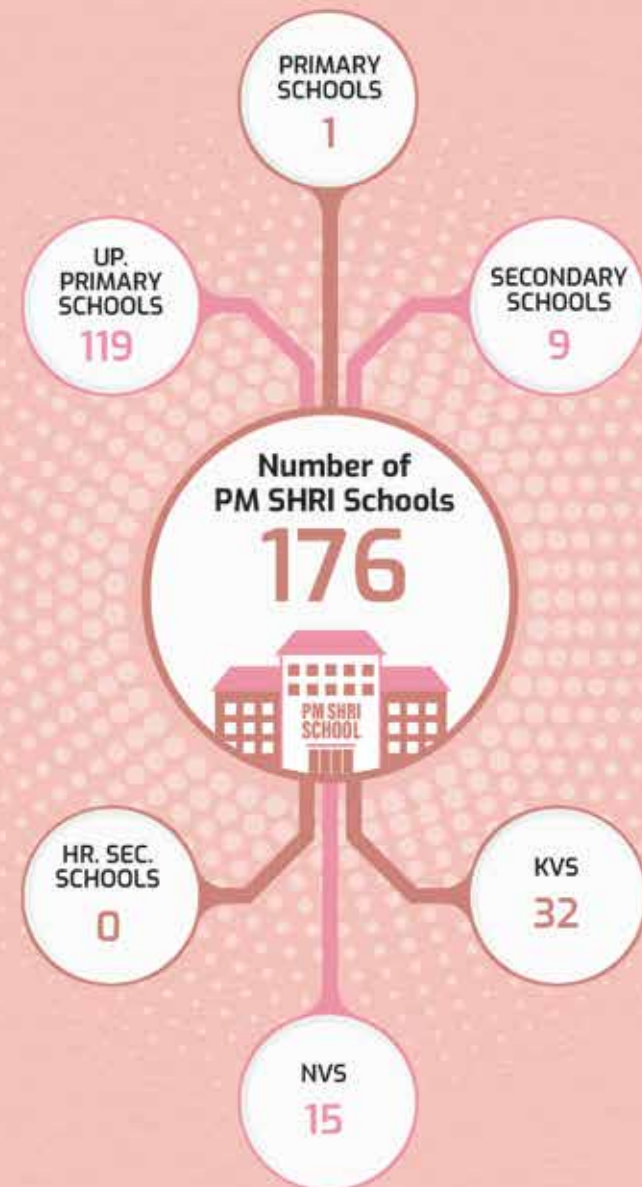
KARNATAKA

In PM SHRI schools in Karnataka, teachers are being trained in sports, toys, play, art, and activity-based pedagogy to ensure they can integrate these methods into classroom processes. They are being oriented on these pedagogies and their importance in achieving age-appropriate learning outcomes as per NIPUN Bharat.

Vocational skill labs, field visits, and workshops are being held for the all-round development of children.

All PM SHRI schools are currently being developed as Green Schools, instilling environmentally sustainable practices to reduce their ecological footprint. Colorful dustbins are being installed to ensure proper waste disposal, while regular field visits and expert talks are being organized to create environmental awareness among students.

All Foundational Literacy and Numeracy teachers (handling Nali-Kali classes of 1 to 3) are currently undergoing training in the Nali Kali methodology, which they will utilize in classroom transactions.



The Teachers handbook to implement the learning activities in classroom, the Class-wise, subject-wise learning Outcome – based Activity banks were printed and supplied to all teachers



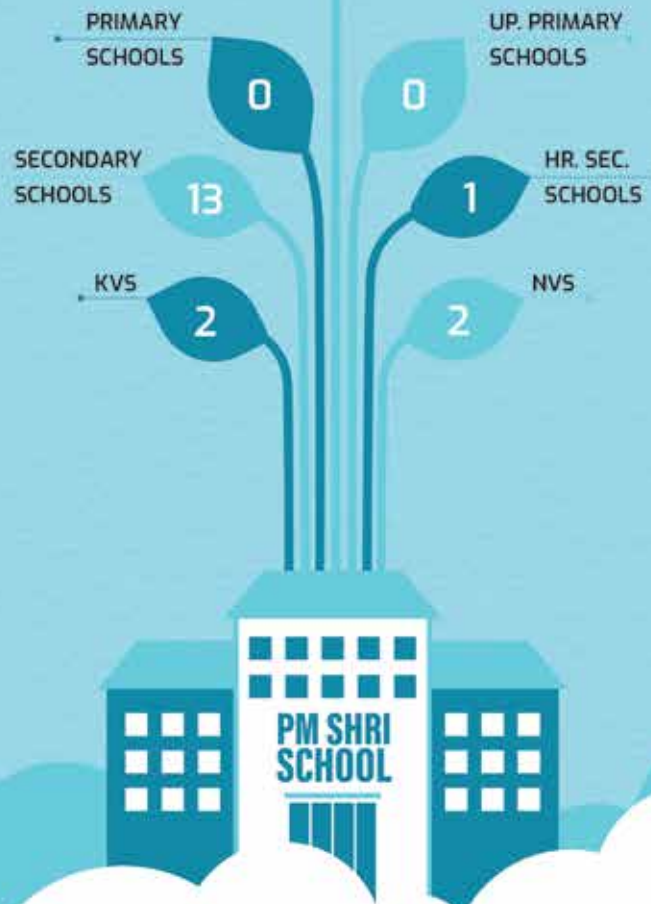
Vocational skill labs, field visits and workshops held for all round development of children were organized in PM SHRI schools, for promoting the study of joyful mathematics related to real-life experiences and mathematical thinking involving artificial intelligence, machine learning, and data science, etc.

LADAKH

Number of Districts
2

Number of Blocks
16

Number of PM SHRI Schools
18



In the picturesque landscapes of Ladakh, the PM SHRI schools are fostering empowerment among female students through self-defense training. These lessons provide invaluable advantages to young children instilling them with confidence, self-reliance, and the ability to protect themselves in challenging situations.

In a recent session at HS Chumathang, Major Skalzang Dorjay Teri, a distinguished guest speaker, shared his remarkable journey from student life to military service. His message resonated deeply with the audience, urging them to eschew distractions and focus wholeheartedly on their ambitions. Major Teri emphasized the importance of sacrifice, encouraging students to relinquish the allure of glamour and addictive temptations in pursuit of their goals. His words carried a profound resonance, instilling in the young minds a sense of responsibility towards themselves and the world at large.



Guest Speaker Major Skalzang Dorjay Teri sharing his inspirational long journey as an army officer with the students of HS Chumathang.



Self Defence training for girls of PM SHRI School Minji, Kargil, Ladakh

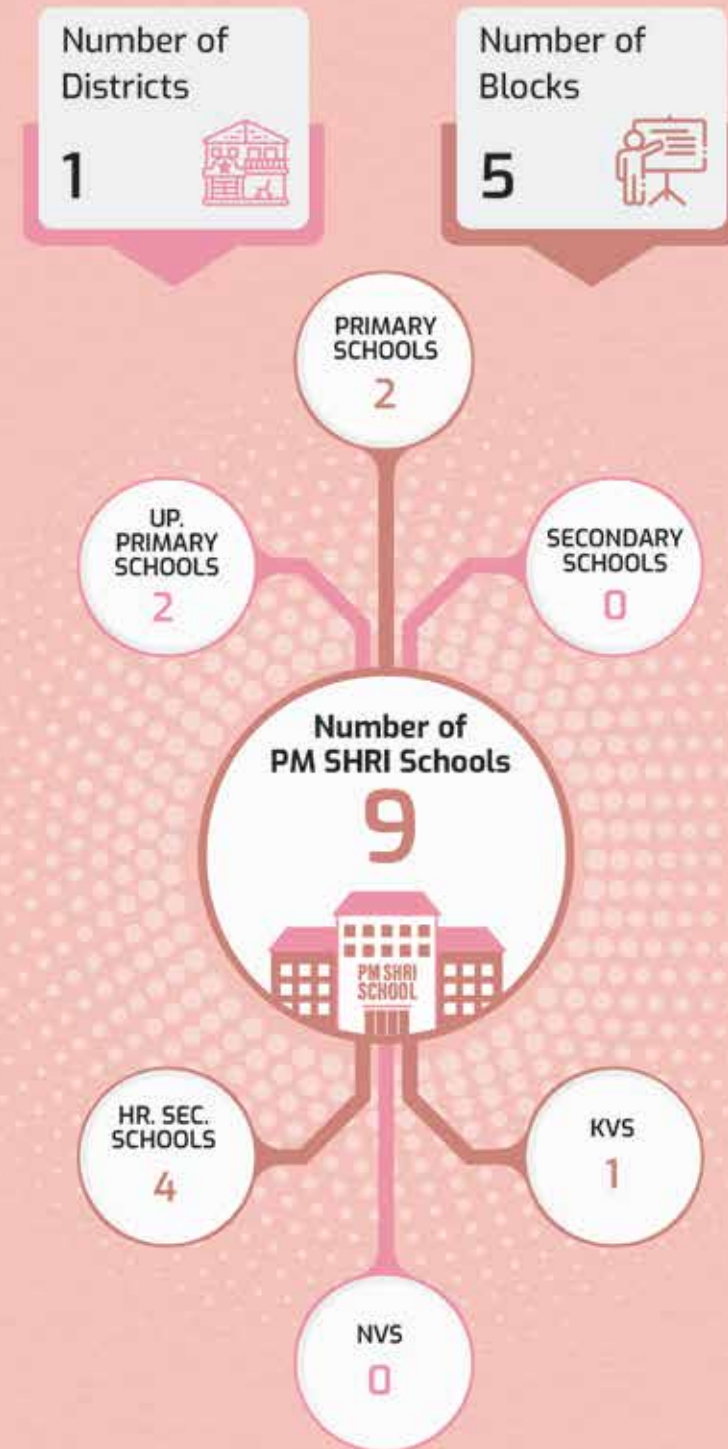
LAKSHADWEEP

A program called **READORIUM** was held at a PM SHRI school in Lakshadweep, encouraging every student to engage in reading. Students chose books from the library and read them openly on the school premises, supervised by teachers. They then discussed their readings with friends and teachers. Teachers monitored these activities and assessed reading skills such as fluency, pronunciation, and comprehension, with input from peers. Each student received a report card based on this assessment, guiding further instruction. This integrated approach exemplifies a student-friendly assessment, where evaluation occurs naturally, seamlessly integrating teaching, learning, and assessment.

At another PM SHRI school, children had the opportunity to learn about the life, culture, and traditions of the islands, including traditional costumes and vocations that influenced the lives of their grandparents. The aim was for children to understand the living conditions of people in the region in the past and to foster a culture of respecting our past lifestyles and traditions. Additionally, a food festival was arranged at the school as part of the **Ek Bharat Shresth Bharat** initiative, aimed at understanding and celebrating the diversity of India, our nation, Bharath.

A unique initiative called **Gandhi Dweep Talks FM** was launched in schools. This initiative aims to provide children with the opportunity to work as radio program anchors, editors, news readers, and presenters. The program takes place in a specially arranged room where students record a weekly program, highlighting main events and significant incidents or observances of the week. A ten-minute program

is recorded and aired through the school's audio system during evening school intervals and lunch breaks. This initiative provides students with the opportunity to showcase their talents while learning essential skills such as anchoring, news reading, program recording, news and script writing, conducting interviews, and language improvement.



Book Fair



Celebrate our Tradition and Culture initiative



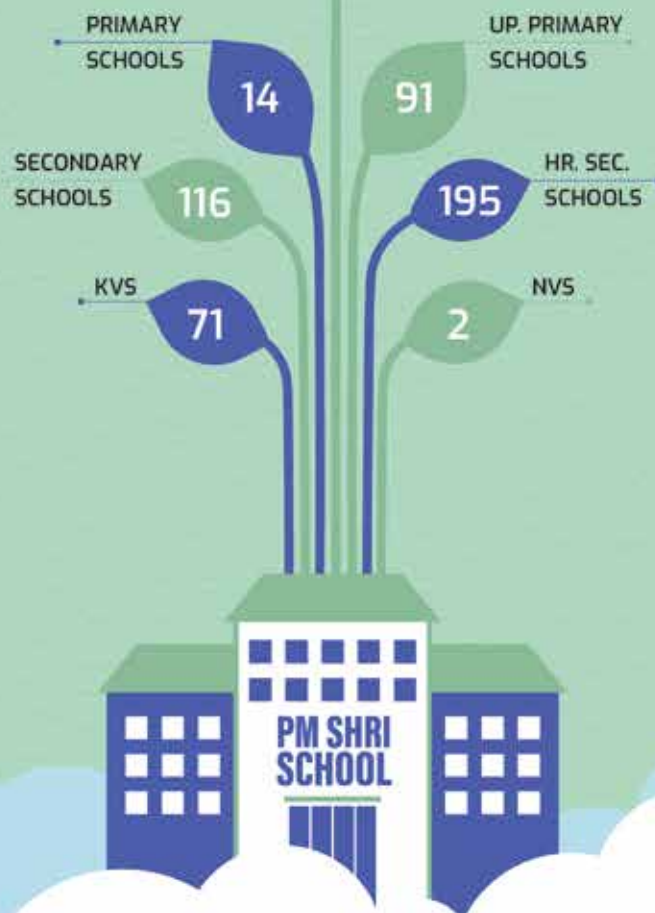
School Radio Initiative

MADHYA PRADESH

Number of Districts
52

Number of Blocks
427

Number of PM SHRI Schools
489



The PM SHRI schools in Madhya Pradesh are setting an exemplary standard in providing top-notch learning opportunities for their students. Their dedication to enhancing every aspect of education, from infrastructure to extracurricular activities, is truly commendable. By establishing Atal Tinkering Labs, they are fostering innovation and problem-solving skills, essential traits for success in the modern world. Here, creativity knows no bounds as students tinker with ideas and bring their imagination to life. And just beyond the classroom doors, a lush green oasis awaits, nurtured by the hands of tomorrow's environmental stewards through plantation drives that instill a deep love for nature amongst the students.

The expert sessions in Maths and Science, along with the engaging models, make abstract concepts more accessible and encourage active learning among students. Moreover, the emphasis on creating vibrant learning environments through colorful walls demonstrates a keen understanding of how aesthetics can positively impact motivation and creativity.

Overall, these initiatives not only enrich academic learning but also nurture essential qualities like curiosity, environmental consciousness, and creativity, preparing students to excel in an ever-evolving world. The PM SHRI schools are undoubtedly making a significant contribution to shaping well-rounded individuals equipped to thrive in the challenges of the future.



Science and maths models being explained to the children in PM SHRI schools



PM SHRI Express IN H55, DHUNAWA – A colourful and cheery colour scheme adopted as BALA features



GOVT. H55 School CHOMA has been developed as a green and inclusive school under PM SHRI

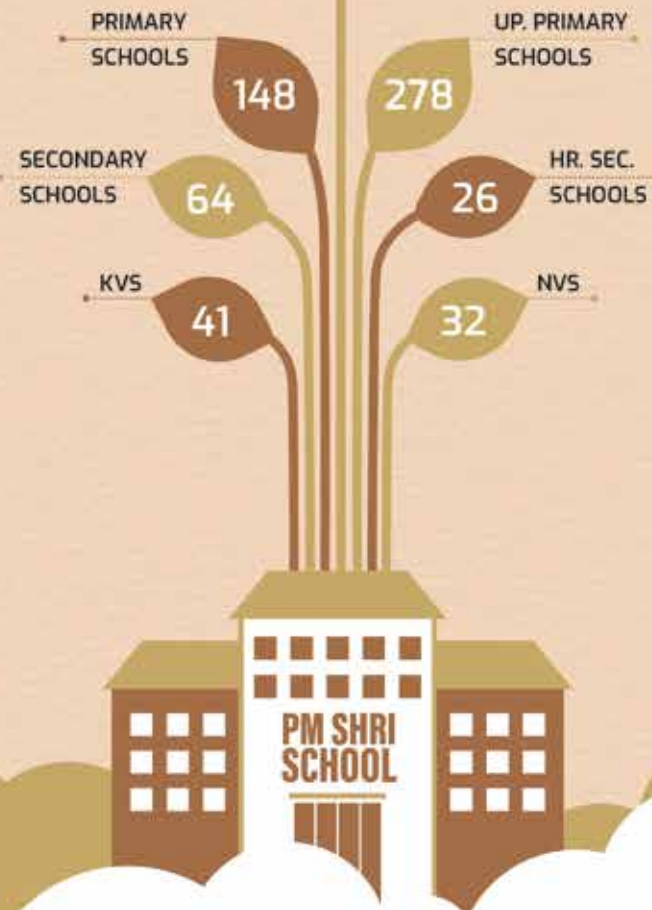
MAHARASHTRA

Number of Districts
36

Number of Blocks
520

Number of PM SHRI Schools

589



The "Building as Learning Aid (BALA)" feature has applied creatively across the PM SHRI Schools of Maharashtra. This initiative is a transformative component where the very building becomes a learning tool for the students.

Through various interactive sessions, group activities, and counseling support, students learn to navigate social dynamics effectively and develop a sense of belonging within the school community. The socio-emotional aspect of these activities focus on building strong interpersonal relationships, empathy, and emotional intelligence among students.

By integrating these elements into the educational framework, PM SHRI Schools are fostering a generation of well-rounded individuals equipped with the skills and resilience to thrive in both academic and personal spheres.

The play furniture revolutionizes classrooms by offering versatile seating options that foster creativity, movement, and collaboration. From bean bags to standing desks, it sparks imagination, encourages active learning, and builds strong social skills. The PM SHRI school students can now say goodbye to dull desks and hello to dynamic, engaging classrooms!



The PM SHRI Zilla Parishad School at Wadgaon (Korpana block, Dist. Chandrapur) has started with LED lights in all classrooms and installing coloured dustbins for waste segregation

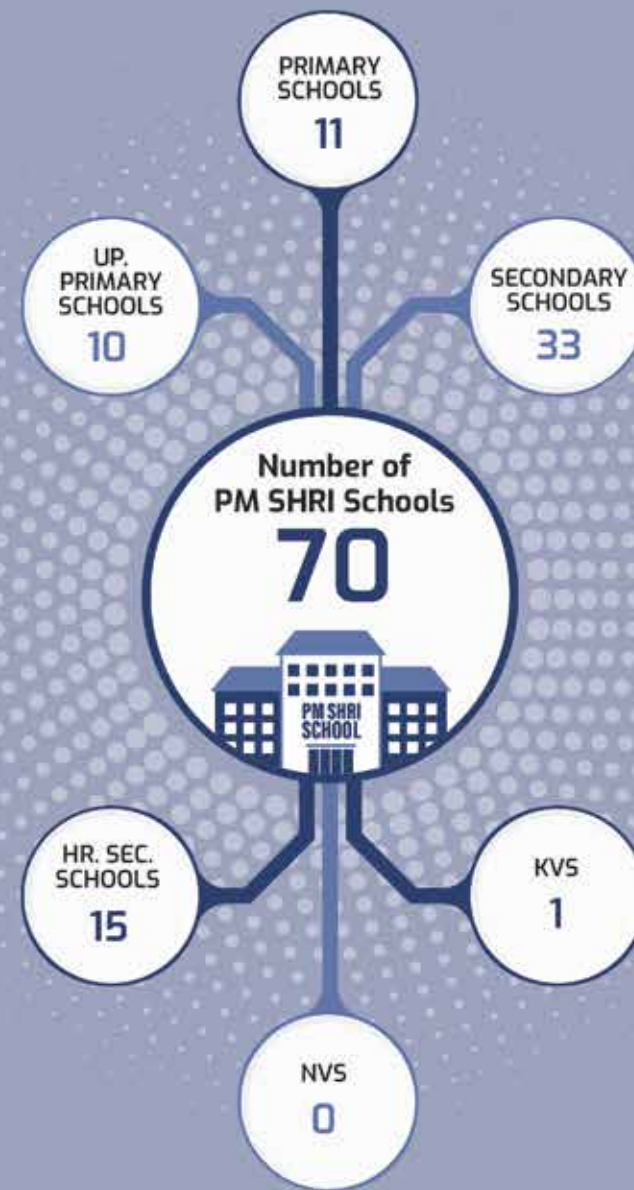


Maximum use of BALA feature: Utilizing the school building itself as a tool for learning, incorporating educational murals, signage, and interactive elements throughout the cam

MANIPUR

PM SHRI Schools in Manipur are taking proactive measures to address learning losses in the classrooms. Their response includes door-to-door campaigns at schools and district levels, coupled with ongoing e-learning initiatives like supplementary books and the 'Lairik' app/website. The 'Lairik' mobile app provides extensive digital content in 85 bilingual audio-visual for classes 1 to 12.

PM SHRI Schools are taking the lead in educational excellence with special state-level residential coaching classes for High School and Higher Secondary grades. These classes aim to enhance student performance through targeted guidance. Additionally, a 21-day Remedial Coaching Class addresses learning loss for internally displaced students during crises. These initiatives reflect PM SHRI Schools' commitment to holistic development and academic success, embodying a proactive approach towards nurturing resilient and thriving students in the region.



School STAR Education is being implemented in 253 schools in Manipur, working in classes 6-10 in all districts with the distribution of 2500 teacher tablets and 500 mobile phones to government school teachers and school headskill developments that empower students with livelihood skills are proving to be extremely popular with students



The Scheme of Vocational education is implemented by the State Implementation Society, Samagra Shiksha, Manipur in collaboration with JCRE Skill Solutions, which is an NSDC partner, in 204 Government Secondary and Higher Secondary schools of Manipur



MEGHALAYA

Central to their ethos is a student-centered approach, facilitated by robust Parent-Teacher relationships. By leveraging parental insights into each child's strengths, weaknesses, and learning styles, the schools tailor learning experiences to individual needs, paving the way for personal growth and academic success.



PM SHRI students participate in cleaning drive inside and outside the school premises at a very tender age



Throughout the academic year, PM SHRI schools in Meghalaya curate a diverse array of activities, enriching the educational journey of their students while nurturing a vibrant school community. From intellectual challenges like Quiz and Elocution competitions to essential forums such as SMC and PTM meetings, the schools prioritize holistic development and effective communication channels.

Community engagement remains paramount, exemplified by initiatives like Cleaning Drives and collaborative Independence Day Celebrations with village members, instilling a sense of civic responsibility and solidarity.

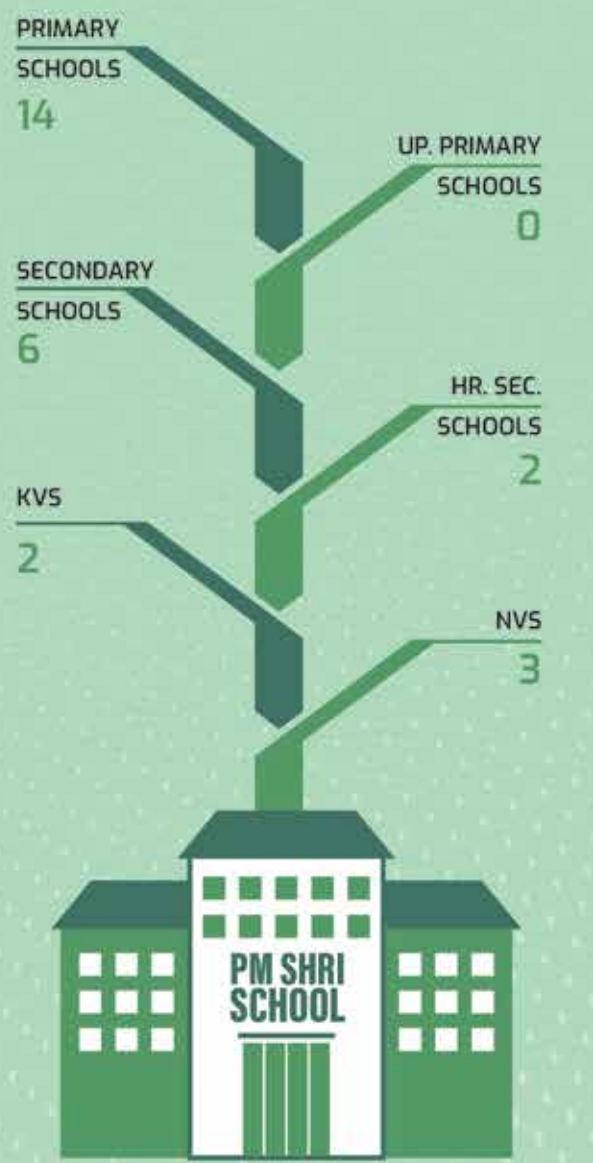
The schools' commitment to holistic education extends to a spectrum of co-curricular activities, encompassing Cultural Programmes, Games, Sports, and creative pursuits like drawing competitions, essay writing, elocutions and short skits. These avenues allow students to explore diverse interests and talents, fostering a well-rounded educational experience. Additionally, awareness drives on pertinent issues like 'Anti-tobacco' further underscore the schools' dedication to societal welfare.

Professional growth is also fostered through Teachers' Orientations on topics such as the National Education Policy (NEP) 2020 and awareness sessions on the School Innovation Council.



As a part of 'Janbhagidari events', the students and teachers raise awareness within their community through cleaning drives and anti-drug campaigns

Number of Districts	Number of Blocks
12	25
Number of PM SHRI Schools	
27	



MIZORAM



PM SHRI Model English School, Lawngtlai conducted an awareness drive on Recyclable materials

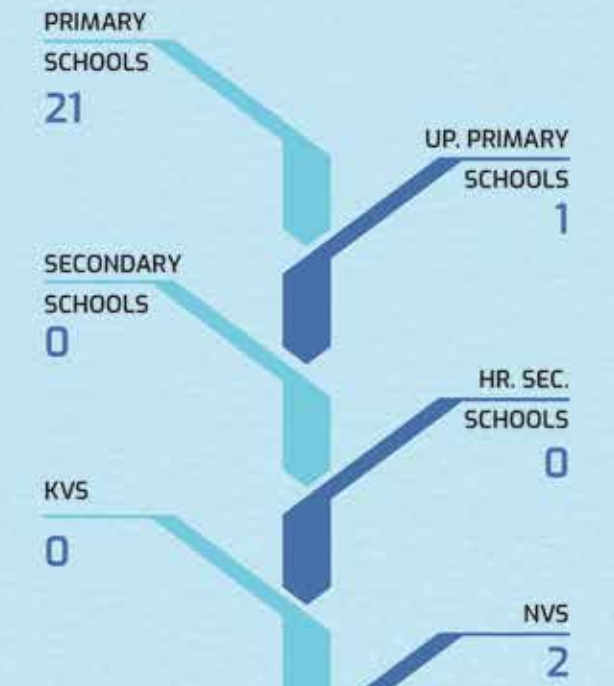
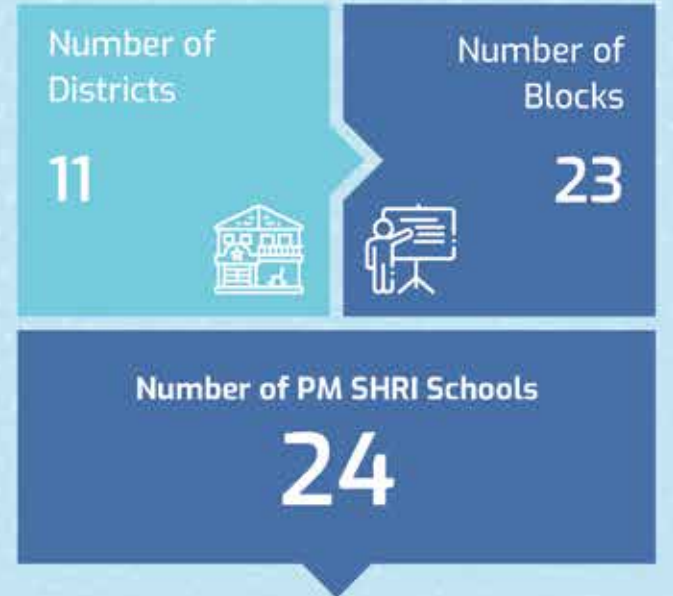
Within the dynamic educational sphere of Mizoram's PM SHRI schools, a myriad of enriching activities flourish, nurturing well-rounded growth and community engagement. Notably, PM SHRI Model English School in Lawngtlai orchestrated a compelling initiative spotlighting recyclable materials, showcasing students' ingenuity through inventive creations like pen holders from discarded plastic bottles and toys from repurposed cardboard boxes. This endeavor aimed to raise awareness among a diverse audience, including the local community, parents, and DIET faculty.

In tandem, PM SHRI Govt. schools curated enlightening excursions, offering students glimpses into Mizoram's rich cultural and historical legacy. Journeys to revered sites such as the Lianchhiari Lunglen Tlang viewpoint and the sacred Fiara tui spring allowed students to immerse themselves in Mizo folklore and heritage.

These initiatives not only enrich students' educational journeys but also instill in them an unbreakable connection with flora, fauna and folklore. Witnessing the transformation of waste materials into functional artifacts cultivates a sustainable ethos, while exploring historical landmarks fosters a deeper connection to Mizoram's cultural fabric. Ultimately, these experiences shape socially aware individuals poised to make meaningful contributions to their communities and beyond.



Field visits organised for PM SHRI Government Primary School II, Champhai. The students visited various historical places like Lianchhiari Lunglen Tlang & Fiara Tui, that have been part of the Mizos folk lore

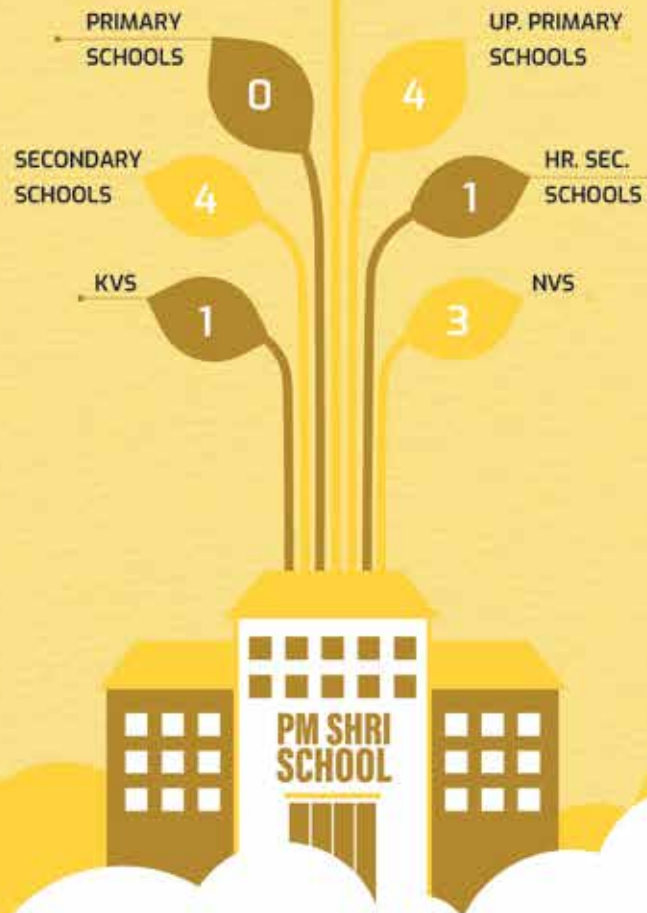


NAGALAND

Number of Districts
14

Number of Blocks
12

Number of PM SHRI Schools
13



PM SHRI Schools in Nagaland epitomize a commitment to holistic education and student well-being, as demonstrated through their health camps in collaboration with the Community Health Centre/Primary Health Centre. The camp encompassed a multifaceted approach, including awareness talks on personal, dental, and menstrual hygiene, substance abuse education, and comprehensive health examinations covering aspects like height, weight, blood pressure, and general health.

Simultaneously, recognizing the profound impact of cultural events in fostering a sense of community, PM SHRI Schools hosted a spectrum of activities such as cultural shows, art and craft sessions, and life skills training. These initiatives not only celebrate diversity but also contribute to cultural awareness among students, teachers, and families. They provide invaluable opportunities for students to showcase their talents, delve into various cultures, and engage in meaningful interactions, creating a rich tapestry of experiences within the school community.

PM SHRI Schools stand as beacons of educational excellence, where the well-being and holistic development of students are at the forefront, setting a paradigm for comprehensive and enriching educational experiences. This blend of health awareness and cultural celebration truly exemplifies the commitment of PM SHRI Schools to creating a dynamic and enriched educational experience.



PM SHRI Schools in Nagaland celebrate community spirit through captivating cultural events



Fostering innovation through dynamic Science and Math seminars/workshops



Championing Excellence: Schools ignite sportsmanship with thrilling sports events



Greening the Future: Schools lead the way with environmentally sustainable practices, nurturing a greener tomorrow



PM SHRI Schools in Nagaland prioritize health with meticulously organized health camps



Schools promoting wellness with meticulously organized health camps

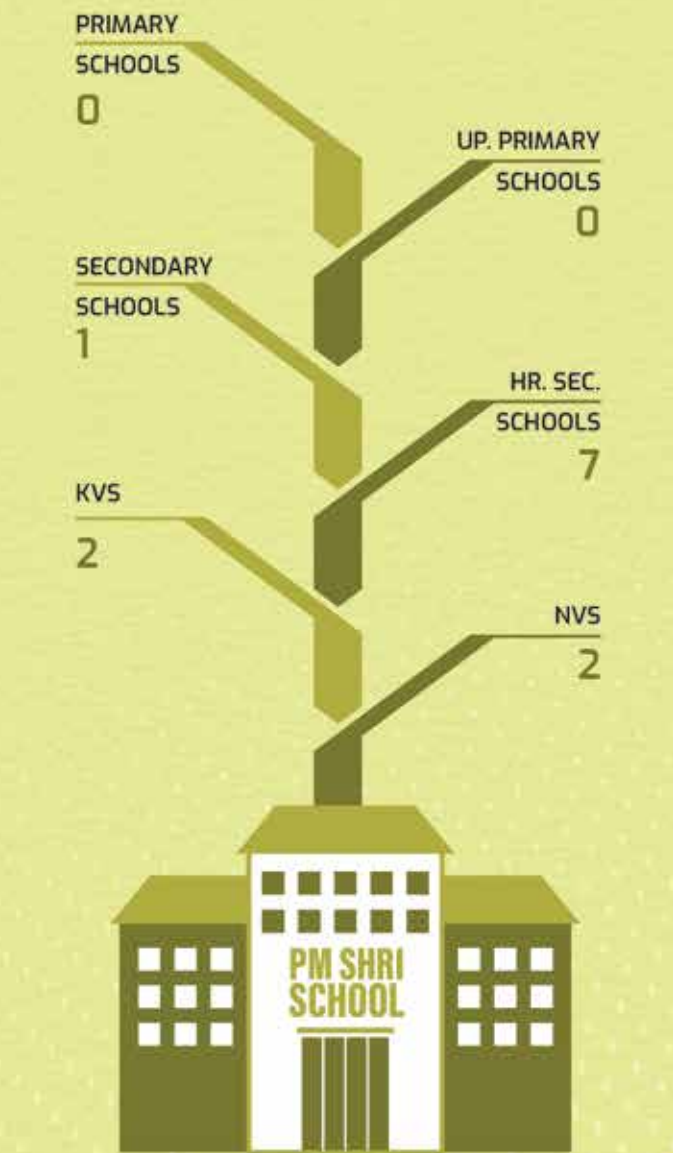
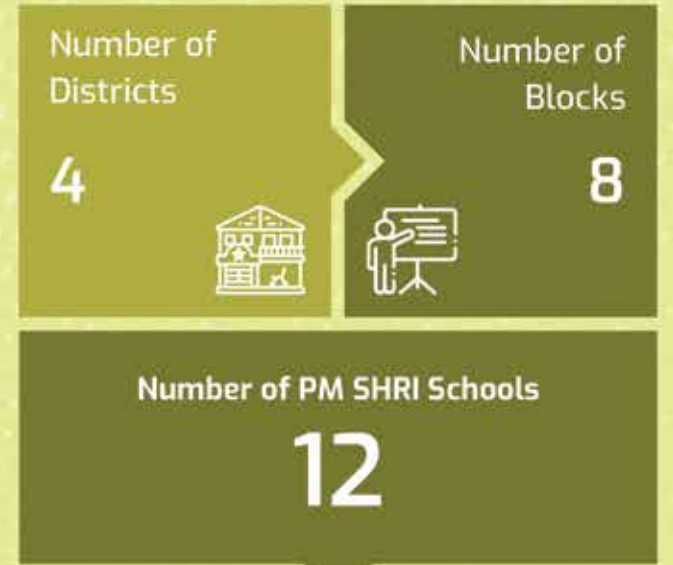
PUDUCHERRY



The Back to Basics (B2B) initiative in PM SHRI schools of Puducherry focuses on enhancing fundamental language skills, particularly among slow learners. Through thorough assessments by teachers, students in need are identified and provided with tailored materials targeting reading, spelling, pronunciation, vocabulary, speaking, writing, referencing, and handwriting. These resources supplement the existing curriculum, ensuring a seamless integration into the educational framework.

Supported by Samagra Shiksha Puducherry, the B2B scheme has proven effective in improving students' language abilities and academic performance. By prioritizing fundamental concepts, especially among slow learners, the initiative has helped narrow learning gaps and create a more inclusive learning environment.

This collaborative effort highlights the importance of addressing diverse educational needs to foster a culture of lifelong learning and development. The success of the B2B scheme underscores the potential for continued support and expansion, promising further enhancements in educational outcomes and empowering students for success in their academic journey.



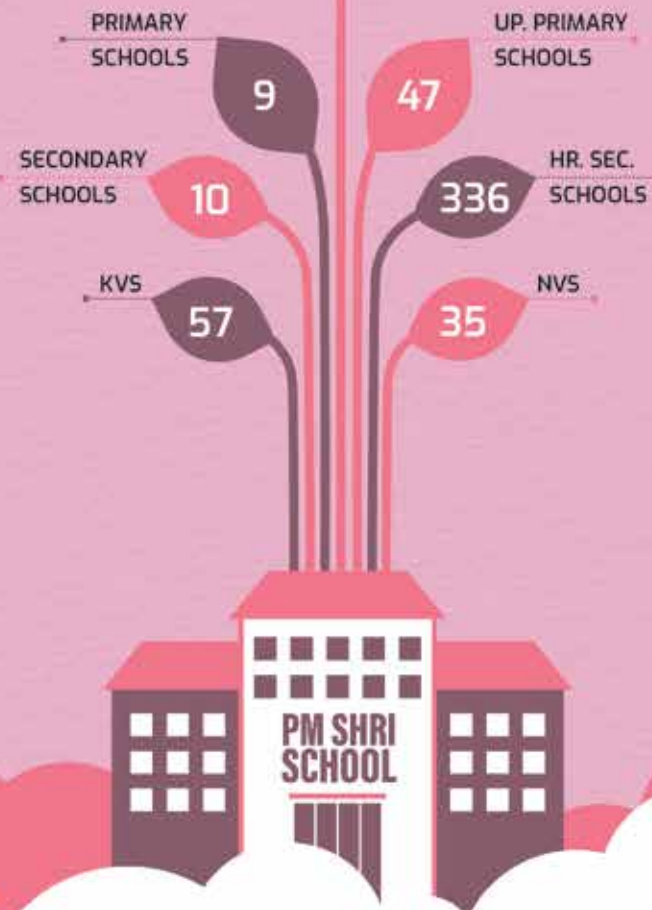
RAJASTHAN

Number of Districts
33

Number of Blocks
430

Number of PM SHRI Schools

494



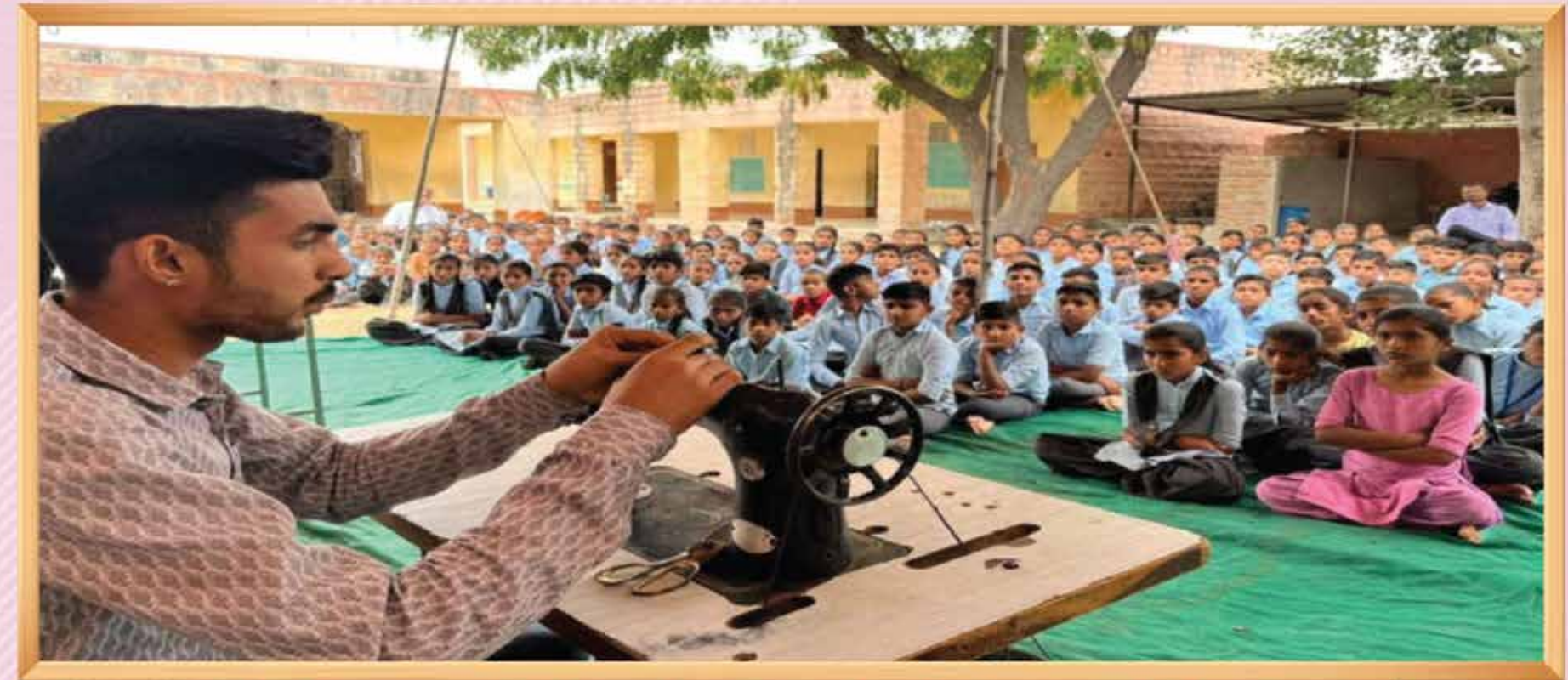
Rajasthan's educational landscape, spanning 33 districts and 430 blocks, has been undergoing significant enhancements under the PM SHRI scheme.

A Skill Development Fair hosted in the schools has emerged as a resounding success, uniting stakeholders from diverse sectors to champion skill enhancement and vocational training. Through a comprehensive display of opportunities and facilitated collaborations between industry and training providers, the fair has contributed significantly to the overarching objective of cultivating a skilled and employable workforce in Rajasthan.

The impact of the Skill Development Fair extends beyond mere participation, as it has profoundly transformed students by equipping them with essential skills, knowledge, and confidence vital for navigating today's competitive landscape and fostering meaningful contributions to Rajasthan's socio-economic development.

The 'Career Mela' initiative has also emerged as a crucial catalyst in bridging the gap between job seekers and employers, promoting skill development, entrepreneurship, and economic empowerment. Various workshops and career counseling sessions showcased abundant entrepreneurship opportunities, further empowering aspiring entrepreneurs amongst the young students.

Overall, these initiatives underscore Rajasthan's commitment to holistic educational development and socio-economic progress, reflecting a concerted effort towards creating a vibrant and prosperous future for the state's populace.



The Skill Development Fair in Rajasthan was a resounding success, bringing together stakeholders from across the state to promote skill enhancement and vocational training



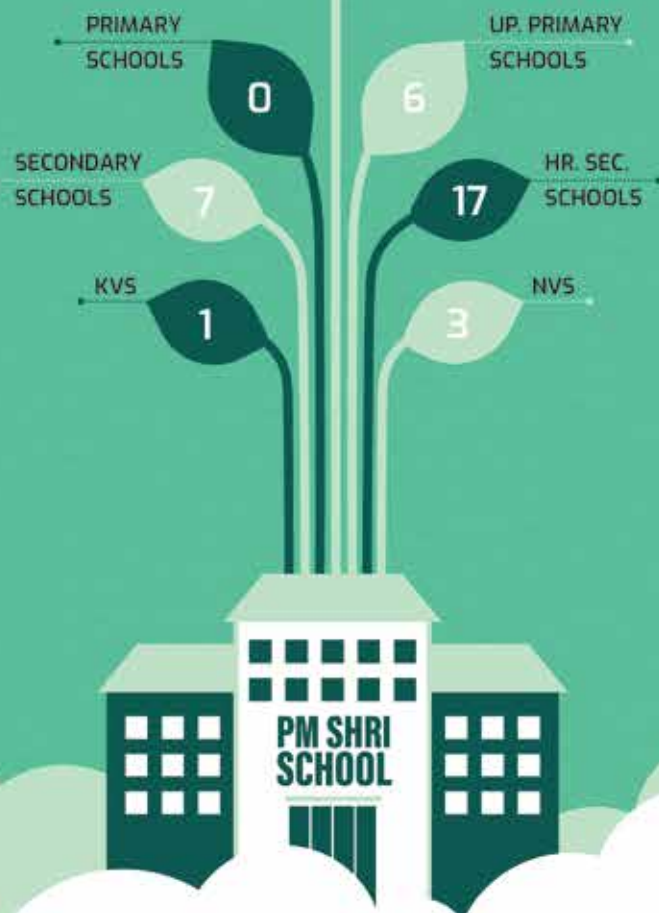
Various workshops along with career counseling was organised during the Career Mela in Rajasthan, showcasing entrepreneurship opportunities for aspiring entrepreneurs

SIKKIM

Number of Districts
6

Number of Blocks
30

Number of PM SHRI Schools
34



Kitchen gardens flourish across various PM SHRI schools in Sikkim, embodying a commitment to practical education and sustainable living. These gardens not only enrich students' understanding of agriculture and nutrition but also serve as vibrant hubs for learning about plant life cycles, environmental stewardship, and healthy eating habits. Through hands-on involvement in planting, tending, and harvesting, students cultivate valuable life skills and develop a deeper connection with nature, fostering a culture of self-reliance and ecological responsibility within their school communities.

Mentoring by local artists and craftsmen is a cherished practice implemented across various schools in Sikkim as part of the PM SHRI initiative. Students benefit from the expertise and wisdom of these artisans, who impart traditional knowledge and skills in diverse art forms such as painting, sculpting, weaving, and pottery. Through hands-on guidance and creative exploration, students gain a deeper appreciation for their cultural heritage and artistic traditions, while also honing their craftsmanship and creativity. This mentorship fosters a sense of pride in local culture and craftsmanship, nurturing a new generation of artisans and preserving Sikkim's rich artistic legacy for generations to come.



Kitchen gardens flourish across various PM SHRI schools in Sikkim, embodying a commitment to practical education and sustainable living



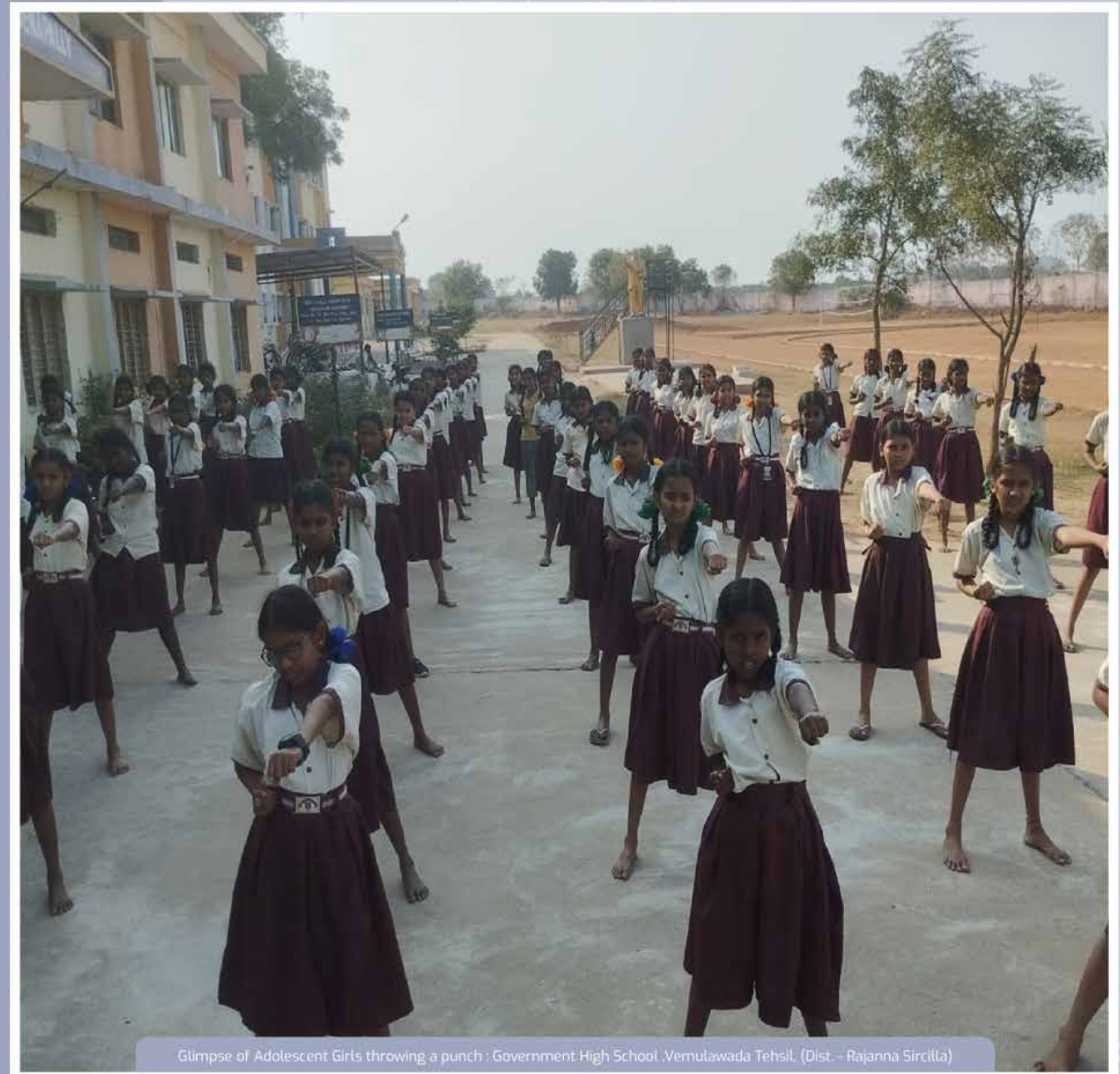
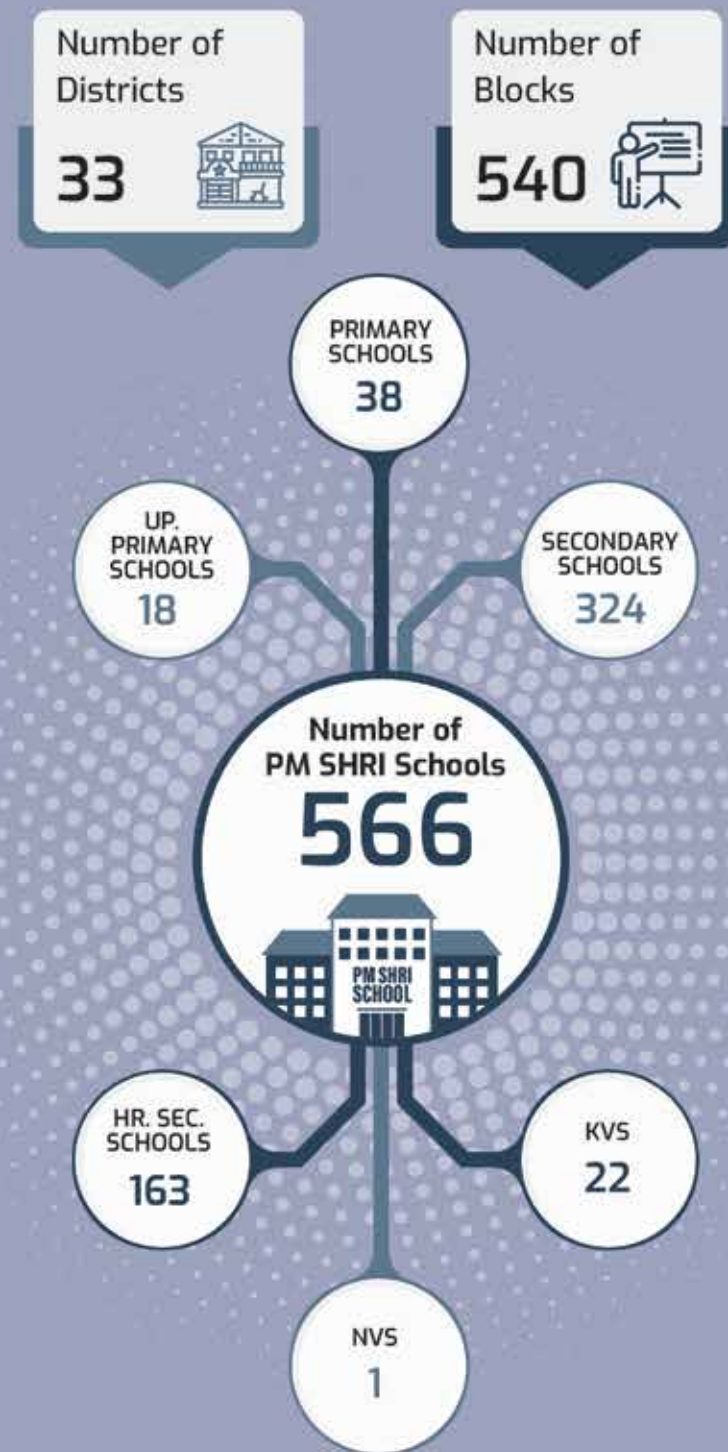
Self-defense training empowers students with essential skills and confidence to protect themselves, fostering a safe and secure learning environment

TELANGANA

The PM-SHRI schools of Telangana have embarked on an ambitious initiative aimed at empowering female students through comprehensive martial arts training. With a focus on disciplines such as Karate, Kung fu, and Kalaripattu, these sessions are designed to equip young women with essential self-defense techniques and instill a sense of confidence and physical resilience.

Through this initiative, the schools aim to foster not only physical prowess but also mental fortitude among female students. By providing them with the tools and skills needed to defend themselves, the program seeks to cultivate a sense of self-assurance and empowerment, enabling girls to navigate their surroundings with greater confidence and security.

PM-SHRI schools in Telangana have also added football and volleyball courts for enhanced physical activity. Additionally, they've improved security with high-definition CCTV cameras campus-wide, with a 24x7 monitoring device.



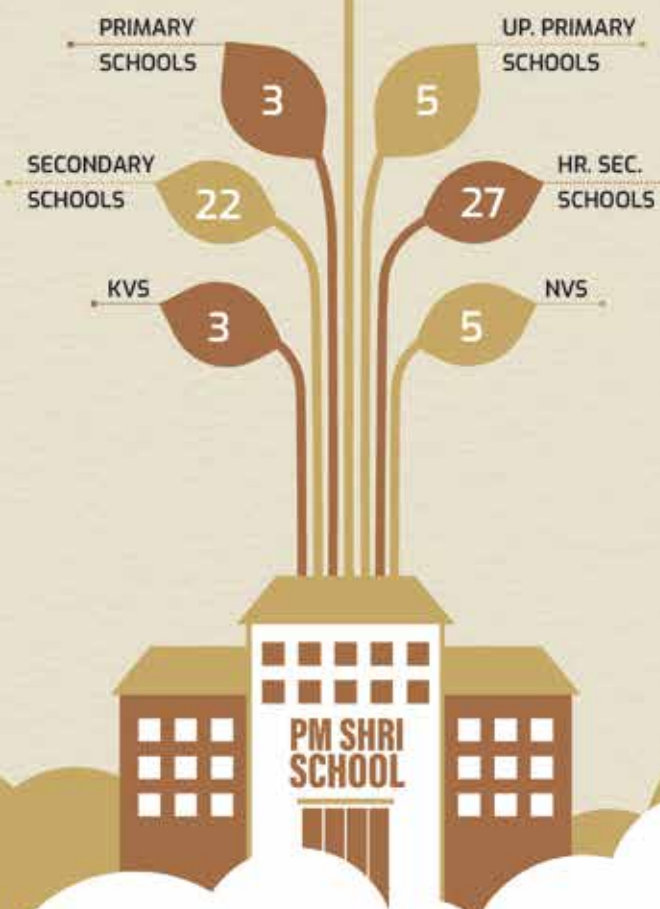
Glimpse of Adolescent Girls throwing a punch : Government High School ,Vemulawada Tehsil, (Dist. - Rajanna Sircilla)

TRIPURA

Number of Districts
8

Number of Blocks
58

Number of PM SHRI Schools
65



This academic year heralds the inauguration of the Science Club at PMSHRI Schools of Tripura, dedicated to bolstering bio-awareness among students. The club's mission is to impart invaluable insights into natural resources while nurturing skills for bio-resource conservation. With a primary focus on fostering a deep understanding of natural resources and instilling a sense of responsibility towards their conservation, the club emerges as a beacon of environmental consciousness in the academic sphere.

An enriching excursion to the State Agriculture College provided PM SHRI school students with a hands-on understanding of agricultural processes. They gained firsthand insights into India's primary economic activity, learning about the integration of modern technologies and techniques in agriculture. This immersive experience not only broadened their horizons but also empowered them with practical knowledge essential for fostering sustainable practices in the field of agriculture.

Regular exercises and yoga sessions make the future assets mentally and physically sound, thereby creating a healthy society. After all, as an old saying goes, "Health is wealth".



Activities of Science Club, organised by PMSHRI Sabroom Girls' HS School, as a part of the Green School Programme



An excursion trip to the State Agriculture College provided with gathering knowledge on the process of Agriculture, to the Students of PM SHRI Navagram HS School

UTTAR PRADESH



Schools uphold cleanliness as a priority before meals under the PM POSHAN initiative. Students are encouraged to maintain hygienic surroundings, ensuring a clean environment conducive to healthy eating habits and overall well-being.

Number of Districts	Number of Blocks
75	917

Number of PM SHRI Schools
1010

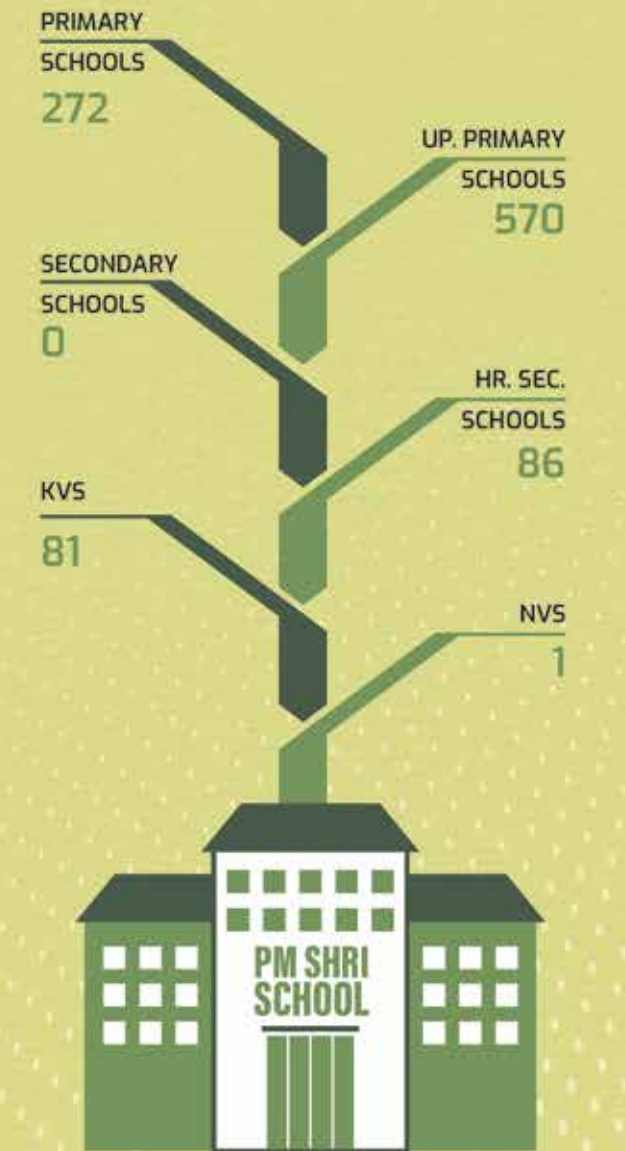


PM SHRI schools across Uttar Pradesh demonstrate a commitment to cleanliness through its participation in Swachhata Pakhwada. During this fortnight, students engage in diverse activities such as clearing weeds and wild plants, and maintaining the garden, fostering a culture of cleanliness and environmental stewardship within the school premises.

These schools also uphold cleanliness as a priority before meals under the PM POSHAN initiative. Students are encouraged to maintain hygienic surroundings, ensuring a clean environment conducive to healthy eating habits and overall well-being.

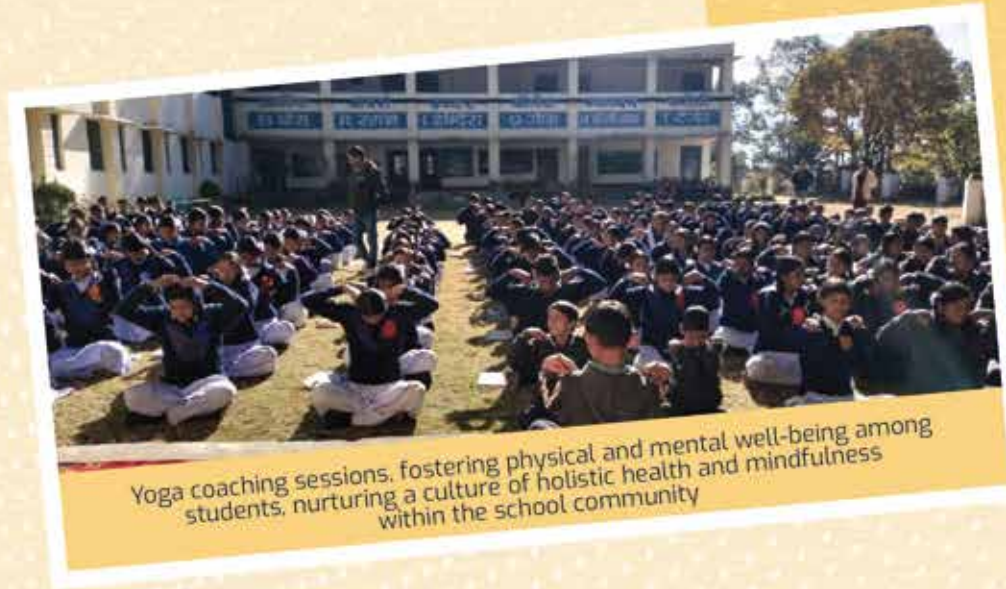
All PM SHRI schools advocate for experiential learning through the "Students Learning by Doing" approach. Students actively engage in hands-on activities and practical experiences, fostering deeper understanding, critical thinking across various subjects and disciplines.

Building as Learning Aids (BALA) initiatives are undertaken in the schools where students grasp crucial concepts such as environmental protection, water conservation, cleanliness, and waste management. The cheerful drawings on walls are also used as tools for enhancing their understanding of language and mathematics in an interactive manner.

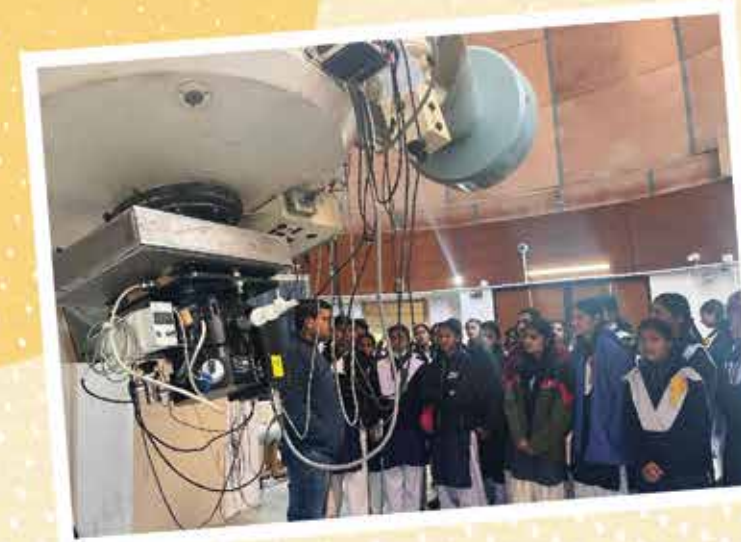


P.M. SHRI. Schools feature Kitchen Gardens and Herbal Gardens, enriching students' learning experiences and promoting sustainability

UTTARAKHAND



Yoga coaching sessions, fostering physical and mental well-being among students, nurturing a culture of holistic health and mindfulness within the school community



PM SHRI GGIC Kotabagh organized an educational tour to the Arya Bhatt Research Institute of Observational Science (ARIES), where students got the opportunity to enrich their academic journey with hands-on learning experiences



PM SHRI schools enhance student engagement and physical fitness through comprehensive sports training programs, empowering students to excel in various athletic pursuits and promoting a culture of sportsmanship and teamwork within the school

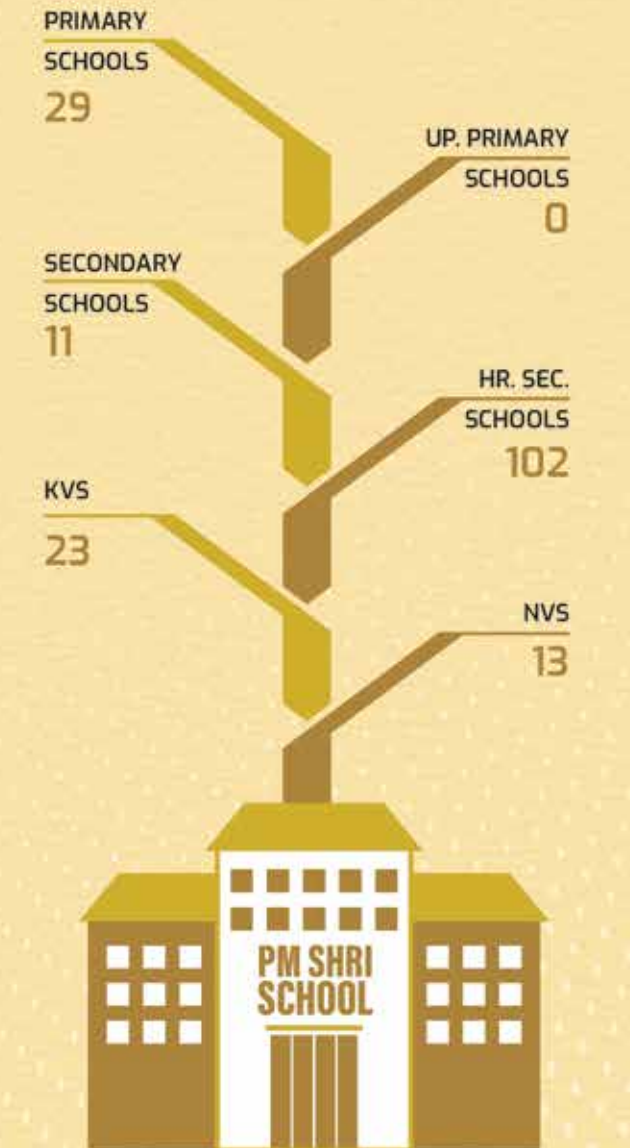
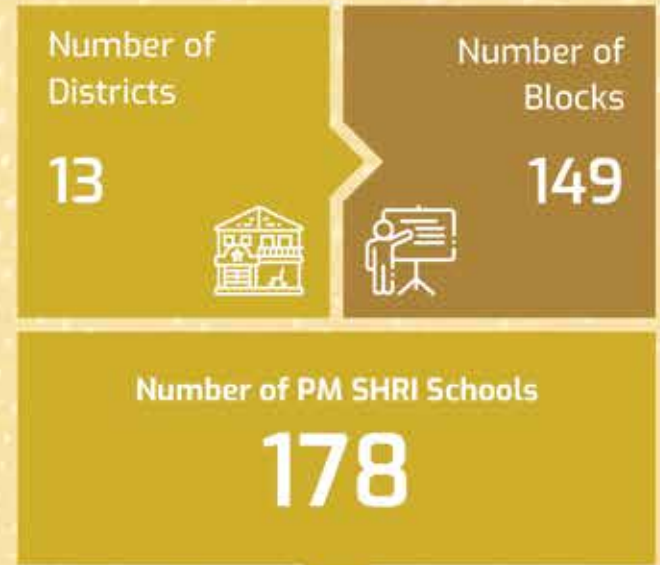
PM SHRI Schools in Uttarakhand feature a creatively designed selfie stand, adding vibrancy to the school environment. Students are encouraged to capture memorable moments, fostering pride and community spirit.

Several PM SHRI schools arranged an educational tour for senior secondary students, during which they explored the Arya Bhatt Research Institute of Observational Science (ARIES), enhancing their academic journey through hands-on learning experiences.

Enhancing the PM POSHAN program, PM SHRI schools in Uttarakhand introduce a variety of millets, enriching meal nutritional value and promoting healthier dietary choices among students.

Furthermore, comprehensive sports training programs enhance student engagement and physical fitness, empowering students to excel in various athletic pursuits and fostering a culture of sportsmanship and teamwork.

The PM SHRI school in Chamoli implements a composting facility and establishes a kitchen garden, fostering sustainability practices and offering hands-on learning opportunities for students to grasp organic waste management and sustainable agriculture principles.



NAVODAYA VIDYALAYAS

The PM SHRI Navodaya Vidyalayas are pioneering institutions in each district, dedicated to providing a stress-free environment conducive to learning, talent nurturing, and holistic personality development. The 312 PM SHRI JNVs spread across 30 States & Union territories strive to elevate the quality of education by fostering collaboration and resource-sharing among neighboring schools.

In the scenic Kumaon and Garhwal region of Uttarakhand, students enthusiastically engaged in a workshop on Ringaal basketry, a traditional craft intricately woven from bamboo. This hands-on experience not only taught them about vernacular materials but also imparted valuable skills in craftsmanship.

Furthermore, beekeeping emerged as a platform for students to develop soft skills like teamwork, creativity, and mindfulness. Guided by instructors, students gained practical insights into beekeeping techniques while learning to cope with anxiety and foster through mindfulness.



Art integration with the academic curriculum has boosted the willingness to learn in PM SHRI students. Creative art-science sessions were conducted in the schools where students depicted scientific diagrams like the structure of the Earth, Amoeba, and the Human Eye on wooden cutouts. This innovative approach fostered curiosity, creativity, and imagination while enhancing students' understanding of complex scientific concepts.

Additionally, the introduction of Advanced Tinkering Labs (ATL) and Open Education Parks provided avenues for students to explore design thinking, computational skills, and collaborative learning in trans-disciplinary pedagogical spaces, enriching their educational journey with adaptive learning experiences.



Ringaal (Bamboo) Art and Craft activity



Pollen foraging



Honey Harvesting

The students learned many things about beekeeping from their instructor, so that they could understand how beekeeping is done and what precautions should be taken while doing it



Bee Keeping



Honey Glass Bottles



ATAL TINKERING LAB (ATL): To foster curiosity, creativity and imagination in students and inculcate design skills, computational thinking and adaptive learning

KENDRIYA VIDYALAYAS



730 KV's

have been selected as PM SHRI Schools

A hands-on workshop tailored for students, focusing on making handloom clothes and basket weaving provides a dynamic and engaging learning experience that promotes creativity, skill development, and personal growth. This workshop aims to provide a supportive environment for artistic exploration and expression, inspiring students to discover their passion for pottery and cultivate a lifelong appreciation for vocational skills.

In KVS Tambaram, expert sculptors are leading informative sessions, generously sharing their knowledge and techniques with eager participants. Attendees are gaining valuable insights into selecting appropriate stone blocks, effective chiseling methods, and achieving aesthetic excellence. Throughout the intensive hands-on training, students are developing their skills in visualizing designs, executing precise cuts, and polishing completed works.

Skilled artisans and professionals were invited to Kendriya Vidyalaya, Boudh, to impart training to students on pottery, embroidery, carpentry, and basic electrical skills. Students crafted various wooden items such as bats, puppets, and dolls, and created intricate designs on clothes.

Students from PM SHRI Kendriya Vidyalaya Pangode had an unforgettable exposure visit to Bio 360 Life Sciences Park in Thonnakkal, Thiruvananthapuram. The highlight was their immersive experience at the Global Science Festival Kerala (GSFK), Asia's largest scientifically curated exhibition. Approximately 500 students from classes 6th to 9th and 11th explored the fascinating blend of science, technology, engineering, art, and mathematics (STEAM).



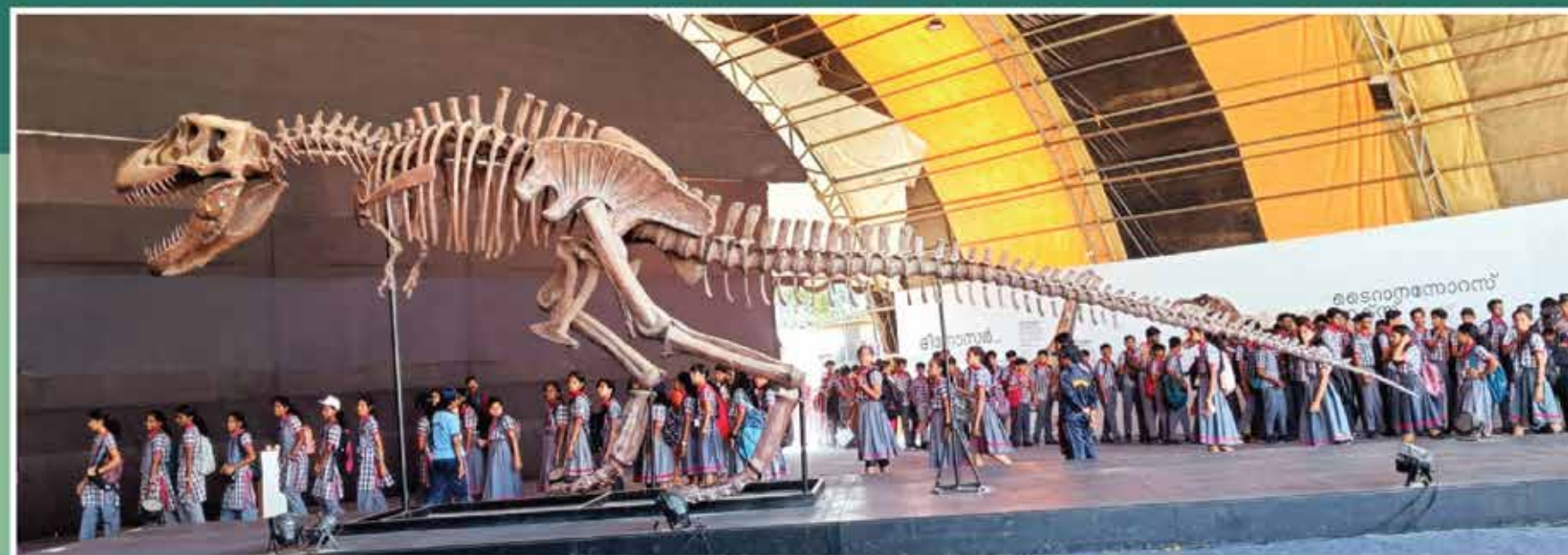
A Hands-on workshop tailored for students for making handloom clothes and basket making offers a dynamic and engaging learning experience that promotes creativity, skill development, and personal growth



KVS, Tambaram Stone Carving workshop: Expert sculptors led informative sessions, generously sharing their knowledge & techniques with eager participants



Skilled artisans & professionals were invited to Kendriya Vidyalaya (Boudh), to impart training to the students on Pottery, Embroidery, Carpentry and Common Electrical skills



Students from PM SHRI Kendriya Vidyalaya Pangode, embarked on an unforgettable Exposure Visit to Bio 360 Life Sciences Park in Thonnakkal, Thiruvananthapuram

TRENDING TWEETS ON #PMSHRI



Narendra Modi
@narendramodi

Today, on [#TeachersDay](#) I am glad to announce a new initiative - the development and upgradation of 14,500 schools across India under the Pradhan Mantri Schools For Rising India (PM-SHRI) Yojana. These will become model schools which will encapsulate the full spirit of NEP.

6:42 PM · Sep 5, 2022



Narendra Modi
@narendramodi

The National Education Policy has transformed the education sector in the recent years. I am certain that the PM-SHRI schools will further benefit lakhs of students across India in the spirit of NEP.

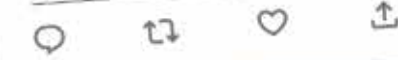
6:42 PM · Sep 5, 2022



Narendra Modi
@narendramodi

The PM-SHRI schools will have a modern, transformational and holistic method of imparting education. Emphasis will be on a discovery oriented, learning centric way of teaching. Focus will also be on modern infra including latest technology, smart classrooms, sports and more.

6:42 PM · Sep 5, 2022



PMO India
@PMOIndia

PM-SHRI schools will be model schools for implementation of the National Education Policy.

Oct 19, 2022



Dharmendra Pradhan
@dpradhanbjp

आज माननीय मुख्यमंत्री श्री [@myogiadityanath](#) जी के साथ [#PMSHRI](#) के अन्तर्गत राज्य सरकार द्वारा चयनित 928 विद्यालयों और 81 केंद्रीय/जवाहर नवोदय विद्यालयों के आधुनिकीकरण का शुभारंभ किया।

विद्यालयों में बेहतर और आधुनिक इंफ्रास्ट्रक्चर और विश्व-स्तरीय पढ़ाई, प्रधानमंत्री [@narendramodi](#) जी की सरकार का प्रमुख एजेंडा है। यूपी में पीएम-श्री के अन्तर्गत 1000 से अधिक विद्यालयों का उन्नयन और आधुनिकीकरण उसी दिशा में एक कदम है।



Dharmendra Pradhan
@dpradhanbjp

On [#TeachersDay](#), PM [@narendramodi](#) ji gives India the gift of knowledge.

Launch of centrally-sponsored Pradhan Mantri Schools for Rising India ([#PMSHRI](#)) across India is a significant step towards implementing the vision of NEP and making India a vibrant knowledge society.

Sep 5, 2022



TRENDING TWEETS ON #PMSHRI



Nirmala Sitharaman Office
@nsitharamanoffc

The Pradhan Mantri Schools for Rising India (PM SHRI) was launched in September 2022. The total cost of the project is Rs 27,360 crores which will be spent over a period of 5 years, in which the Centre alone will spend Rs 18,128 crores.

PM SHRI schools will stand out as exemplary schools which will improve the quality of education in India.

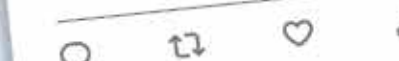
- Smt [@nsitharaman](#).



Punyasloke Bhadury
@BhadPunyasloke

It was a nice experience to speak with young minds of [@AliporeKv](#) today and share the experiences of working as a marine biologist as part of PM Schools for Rising India (PM SHRI)

[@EduMinOfIndia](#)



Dr. Suchitra Raghavachari
@DrSRaghavachari

A fantastic initiative Sir! [#PM_SHRI](#) will be a gamechanger in the field of education. With full fledged implementation of NEP, teaching modules & methods, language options, tech hubs, this will prepare our young for a knowledge economy & give wings to their aspirations.

Sep 5, 2022



TESTIMONIALS



As PM SHRI School, my school infrastructure has been upgraded, students enjoy gamified learning, pedagogy is more experimental, holistic and toy based.

Innovation in Robotics and coding encourages students to think out of the box, to be more inquisitive and to enjoy learning.

Green School concept helps the students to take care of nature and wetlands. Students enjoy bagless days and enjoy experimenting with science and maths kit.

I am thankful to Hon'ble PM for this initiative and look forward to get support from the Central Government, so that we can work towards all round development of the child and no child should be left behind.

- Maria Mourena Miranda

Headmistress, PM SHRI Government High School, Morpila, Quepem, Goa

As a PM SHRI school's student, I enjoy learning in my school as all my teachers use lot of TLMs, dramas, songs and make learning more enjoyable.

The field trips are always very informative and we all look forward for many more.

As a student of PM SHRI School, we got a great chance to innovate with 3D printing, robotics and coding.

Our health is being taken care of through regular check-ups and supply of extra millets items in our mid-day meal. Thank you Hon'ble PM for selecting our school as PM SHRI.

- Prajay Sharad Velip

Class 10th, PM SHRI Government High School, Morpila, Quepem, Goa

TESTIMONIALS



After being selected as a PM SHRI school Government High School, Bicholim got a huge benefit, many activities are conducted as a PM SHRI School where in community participation was involved like rally on Water conservation, Road safety, programme on Meri Mati Mara Desh, Cultural Programme, etc.

Students are taken for exposure visit at Science Centre, Science film festival, field trips at dam, museum, state library, Polytechnique, etc., which had helped the school to change a student's mindset and we found they are eager to learn a lot and want to explore a lot in teaching learning process.

- Sangeeta B. Mandrekar

Headmistress, PM SHRI Government High School, Bicholim, Goa

As a student at PM SHRI GHS Gaval Khol Canacona, I really like how we learn through fun activities. Teaching is done not only in classrooms but by using computer technology and through hands on experiences which we enjoy. This helps us to learn and remember things better. When our parents get involved in some of the school activities which makes us feel happy. I think we should do even more of these activity-based lessons.

- Miss Kushi I. Velip

Class 9th, PM SHRI School Gaval Khol Canacona, Goa



The PM-SHRI schools will have a modern, transformational and holistic method of imparting education. Emphasis will be on a discovery oriented, learning centric way of teaching. Focus will also be on modern infra including latest technology, smart classrooms, sports and more.

- Narendra Modi
Prime Minister



शिक्षा मंत्रालय
MINISTRY OF
EDUCATION



PM
SHRI
Creating holistic and well-rounded individuals
equipped with key 21st Century skills

“ EDUCATE A CHANGE



” WHERE NO CHILD IS LEFT BEHIND