

SAMAGRA SHIKSHA



Government of India
Ministry of Education
Department of School Education and Literacy

COVERAGE

36



All 36 States and
UTs

32

31 SCERTs and
1 SIE

11.6



Lakh Government
and Government -
aided schools

609

DIETs

15.6



Crore Students

7039

BRCs

57



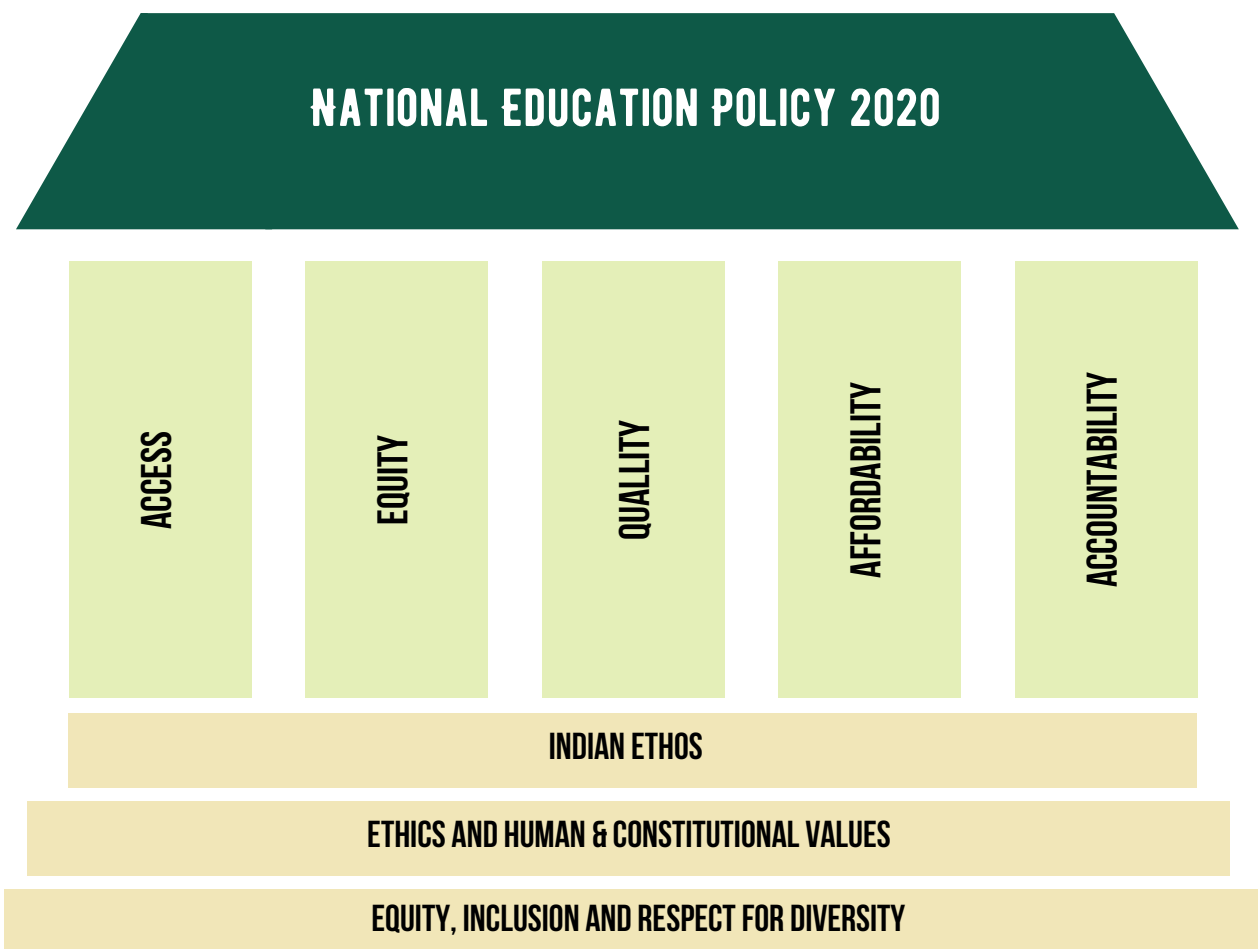
Lakh Teachers

86499

CRCs

FOCUS OF THE NEP

NEP 2020 focuses on the Holistic development of learners. It promotes experiential learning at all stages to inculcate critical thinking, creativity, and curiosity among the students and recognises the unique potential of each Student. The NEP 2020 is built on the following pillars:

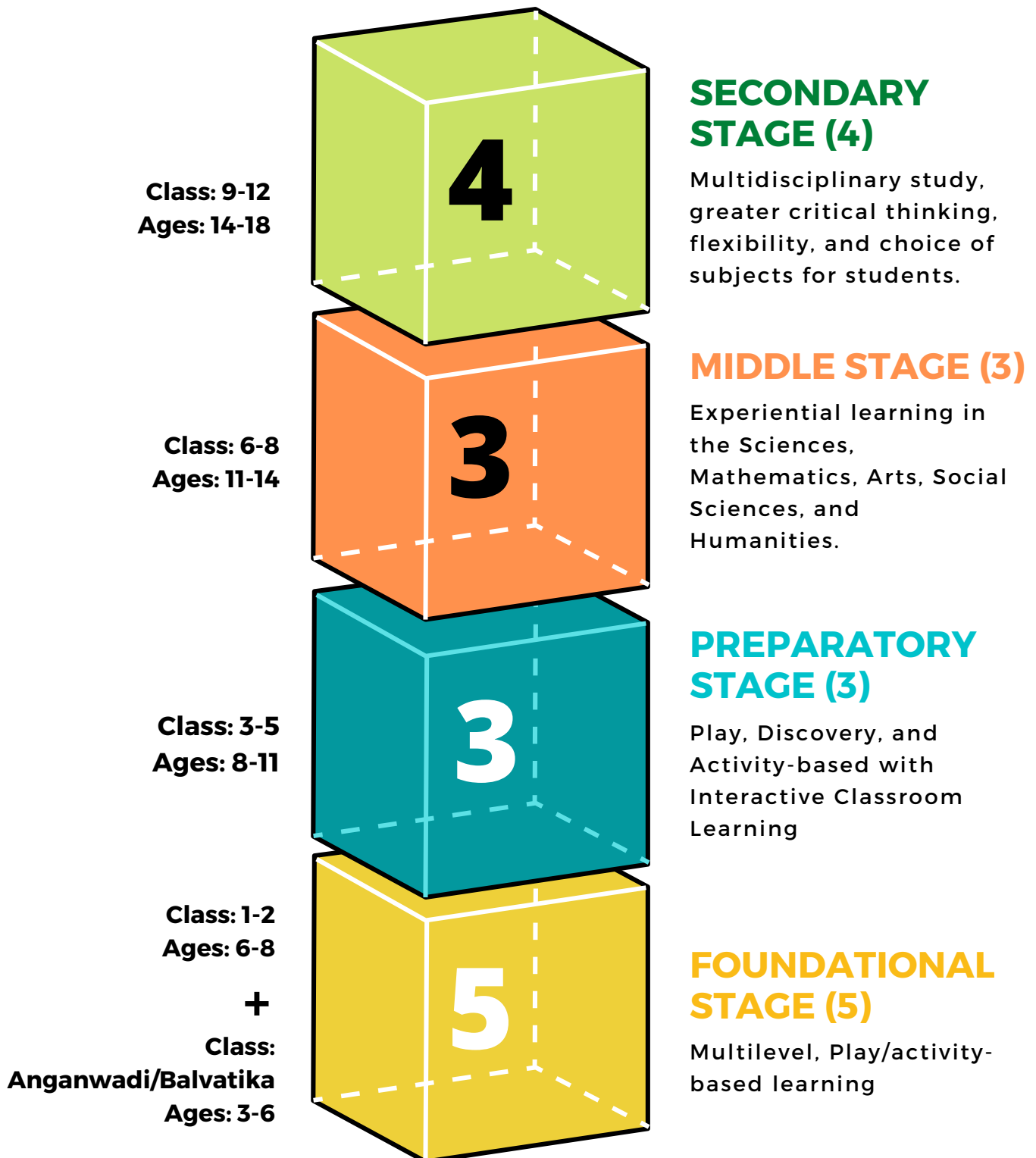


- Samagra Shiksha is an integrated scheme of the Government of India for School Education from pre-primary to senior secondary level.
- 86 paras of NEP recommendations have been included under Samagra Shiksha.
- Scheme is in accordance with Sustainable Development Goal for Education (SDG-4).
- Samagra Shiksha Scheme has been extended up to 2025-26 with several new features.

OBJECTIVES

- 1 Implementing the recommendations of NEP 2020
- 2 Supporting States & UTs in implementing the Right to Education Act, 2009
- 3 Enhanced Focus on Early Childhood Care and Education
- 4 Emphasis on Foundational Literacy and Numeracy
- 5 Thrust on Holistic, Integrated, Inclusive and activity-based Curriculum
- 6 Provision of quality education and enhancing learning outcomes of students
- 7 Bridging Social and Gender Gaps in School Education
- 8 Ensuring equity and inclusion at all levels of school education
- 9 Strengthening and up-gradation of SCERTs/SIE and DIETs
- 10 Ensuring safe, secure and conducive learning environment in schools
- 11 Promoting vocational education

Samagra Shiksha supports new pedagogical and curricular structure of school education (5+3+3+4):





Governance Reforms

01

Administrative structure

Single and unified administrative structure leading to harmonized implementation

02

Flexibility to States and UTs

Flexibility to the States and UTs to plan and prioritize their interventions within the scheme norms and the overall resource envelope available to them.

03

Key Performance Indicators

Measurable Key Performance Indicator for every component

04

Tech-enabled audit

Technology-enabled social audit for effective monitoring.

05

PRABANDH System

Decentralized planning, implementation & monitoring up to school level through PRABANDH system.

Focus on Foundational Learning

Pre-primary

- 1** Support for pre-primary sections and co-location of Anganwadis in Government Primary Schools.
- 2** Training of Master Trainers for the training of Anganwadi workers and In-service training for ECCE Teachers.
- 3** Provision of up to Rs 500 per child for Teaching Learning Materials, indigenous toys, and games, play-based activities in pre-primary sections in Government Schools.
- 4** A National Curricular and Pedagogical Framework for Early Childhood Care and Education (NCPFECCE) will be developed consisting of physical and motor development, cognitive development, socio-emotional-ethical development, cultural/artistic development, and the development of communication and early language, literacy, and numeracy.

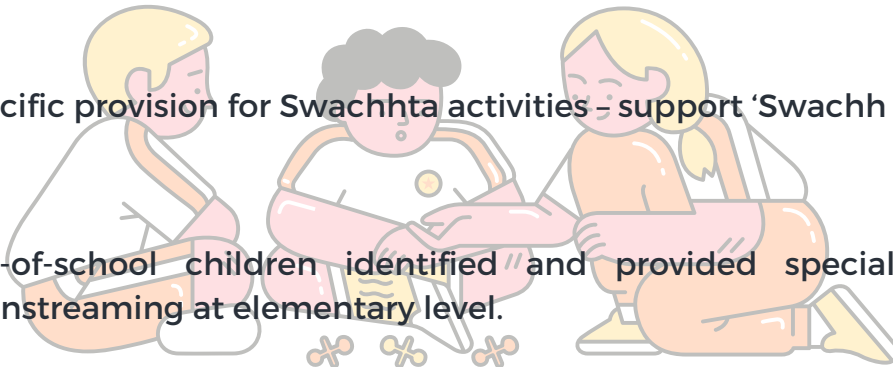


NIPUN Bharat (National Initiative for Proficiency in Reading with Understanding and Numeracy):

- 1** The National Mission on Foundational Literacy and Numeracy to ensure that every child achieves the desired learning competencies in reading, writing, and numeracy by the end of grade III .
- 2** Provision of TLM and Vidya Pravesh Module (school preparation module) upto Rs 500 per child per annum, Rs 150 per teacher for teacher manuals and resources, Rs 10-20 lakh per district for assessment.
- 3** Specific training modules under NISHTHA to train Pre-primary and Primary teachers on Foundational Literacy and Numeracy
- 4** Provision of PMU at National, State and District level.

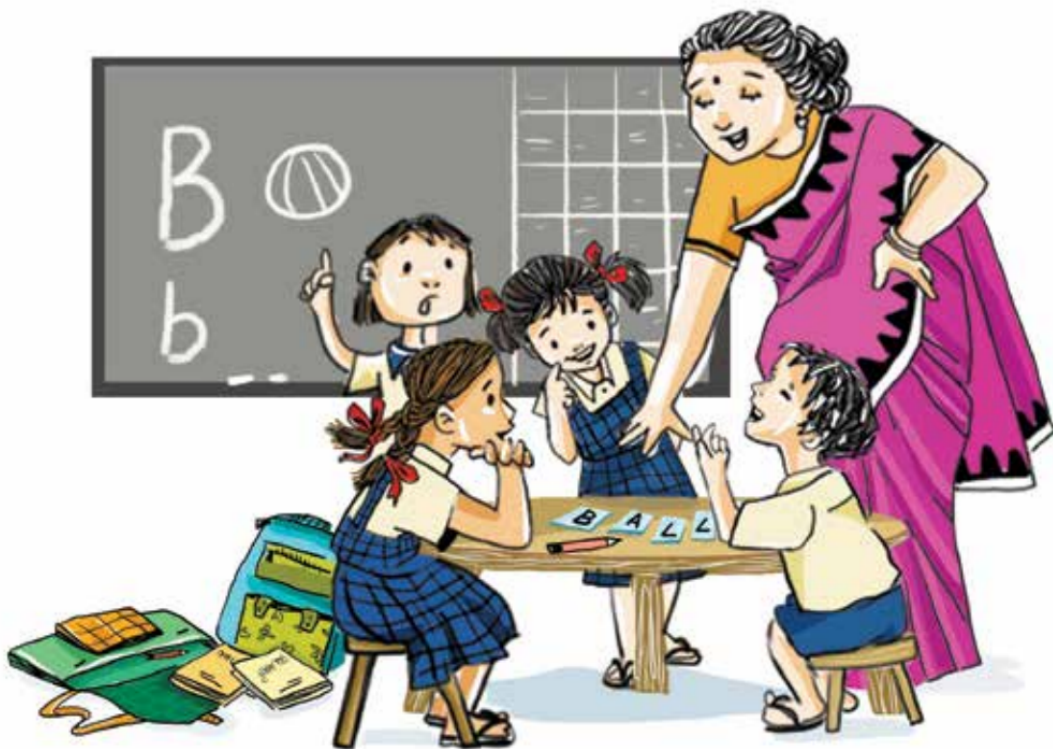
Improving access and retention

- 1 New/Upgraded schools from Pre-school to Class 12
- 2 Improve the Quality of Infrastructure in Government Schools (Additional Classrooms, Integrated Labs, Toilets, electrification, Drinking water, barrier free access, rain water harvesting etc.)
- 3 Addition of new subjects instead of Streams in existing senior secondary schools.
- 4 Composite School Grant of Rs. 25,000 - 1 Lakh based on school enrolment.
- 5 Specific provision for Swachhta activities - support 'Swachh Vidyalaya'
- 6 Out-of-school children identified and provided special training for mainstreaming at elementary level.
- 7 Support for socio-economic disadvantaged groups (SEDGs) out of school children at 16 to 19 years of age of upto Rs. 2000 per child per grade to complete their secondary/senior secondary levels through NIOS/SOS.
- 8 Provision of 'Netaji Subhash Chandra Bose Awasiya Vidyalaya' for children in difficult circumstances in remote areas and urban slums.
- 9 Support for State Commission for Protection of Child Rights (SCPCR)



Child centric interventions

- 1 Free uniforms for all Girls and BPL, SC and ST boys at elementary level of Government Schools.
- 2 Free Textbooks for all students of Government and Government Aided Schools at elementary level including Braille and Large print books for children with visual impairment.
- 3 Transport facility extended to secondary level @ upto Rs 6000/- per child per annum
- 4 Greater emphasis on Direct Benefit Transfers (DBT) so that various benefits reach directly to the students in the shortest time.



Quality & Innovation

- 1** Support for Learning Enhancement/Enrichment Programme
- 2** Provision of Annual Library Grants (Padhe Bharat Badhe Bharat Programme) for each school for promotion of reading habits covering primary to senior secondary level
- 3** Provision of Sports Grant for each school for promoting indigenous sports and fitness from primary to senior secondary level.
- 4** Additional Sports grant of up to Rs. 25000 in case at least 2 students of the school win a medal in Khelo India games at the National level.
- 5** Holistic, Progress Card (HPC) showing progress/ uniqueness of each learner in the cognitive, affective, and psychomotor domains .
- 6** Provision for Bagless days, school complexes, internships with local artisans, curriculum and pedagogical reforms etc.
- 7** Support for activities of PARAKH (Performance Assessment, Review, and Analysis of Knowledge for Holistic Development), the National Assessment Centre
- 8** Setting up of assessment cell preferably at SCERT to conduct competency-based achievement surveys, develop test materials & item banks, data analysis etc.
- 9** Support for Rashtriya Avishkar Abhiyan (RAA) to promote Science and Maths learning in schools.

Teacher's capacity building and strengthening of Teacher Education Institutions (TEIs)

- 1 Renewed focus on Capacity Building of Teachers and School Heads
- 2 Provision for in-service teachers professional development from pre-primary to Class XII under NISHTHA (National Initiative for School Heads' and Teachers' Holistic Advancement)
- 3 Provision for Establishment of New SCERT and new DIETs in districts created upto 31st March 2020 (earlier it was till 31st March 2017)

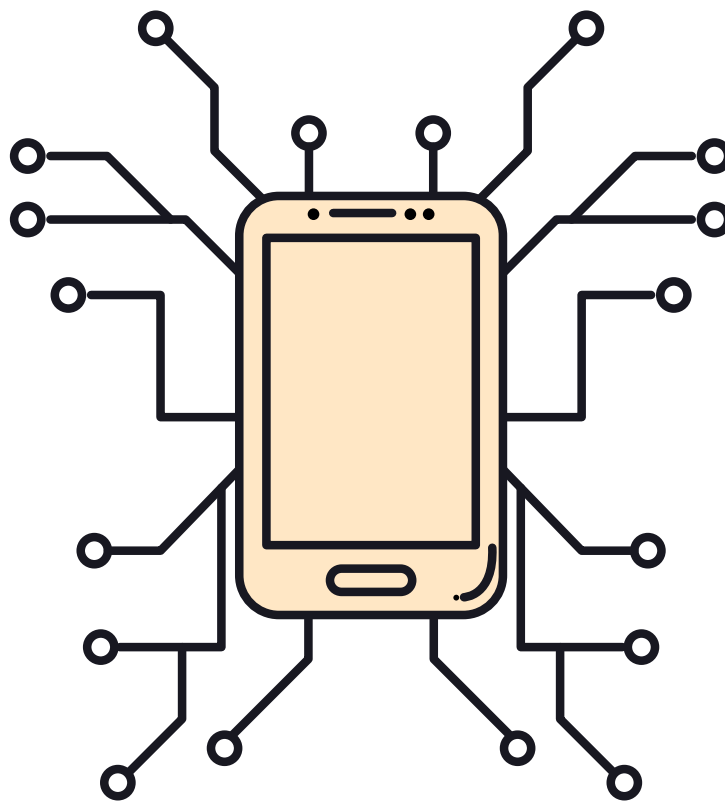


- 4 Academic support by BRCs and CRCs extended for pre-primary and Secondary level.
- 5 Strengthening Teacher Education Institutions like SCERTs and DIETs to improve the quality of teachers in the system
- 6 SCERT to be the nodal institution for in-service teacher training - to make training dynamic and need-based.

Focus on IT and use of Technology

1 Provision of ICT labs, Smart classrooms including digital boards, virtual classrooms, and DTH channels in upper primary to senior secondary schools.

3 DIKSHA with quality digital content to address the challenges of multi lingual and diverse classrooms.



2 Digital initiatives like UDISE+, Shagun, to be strengthened.

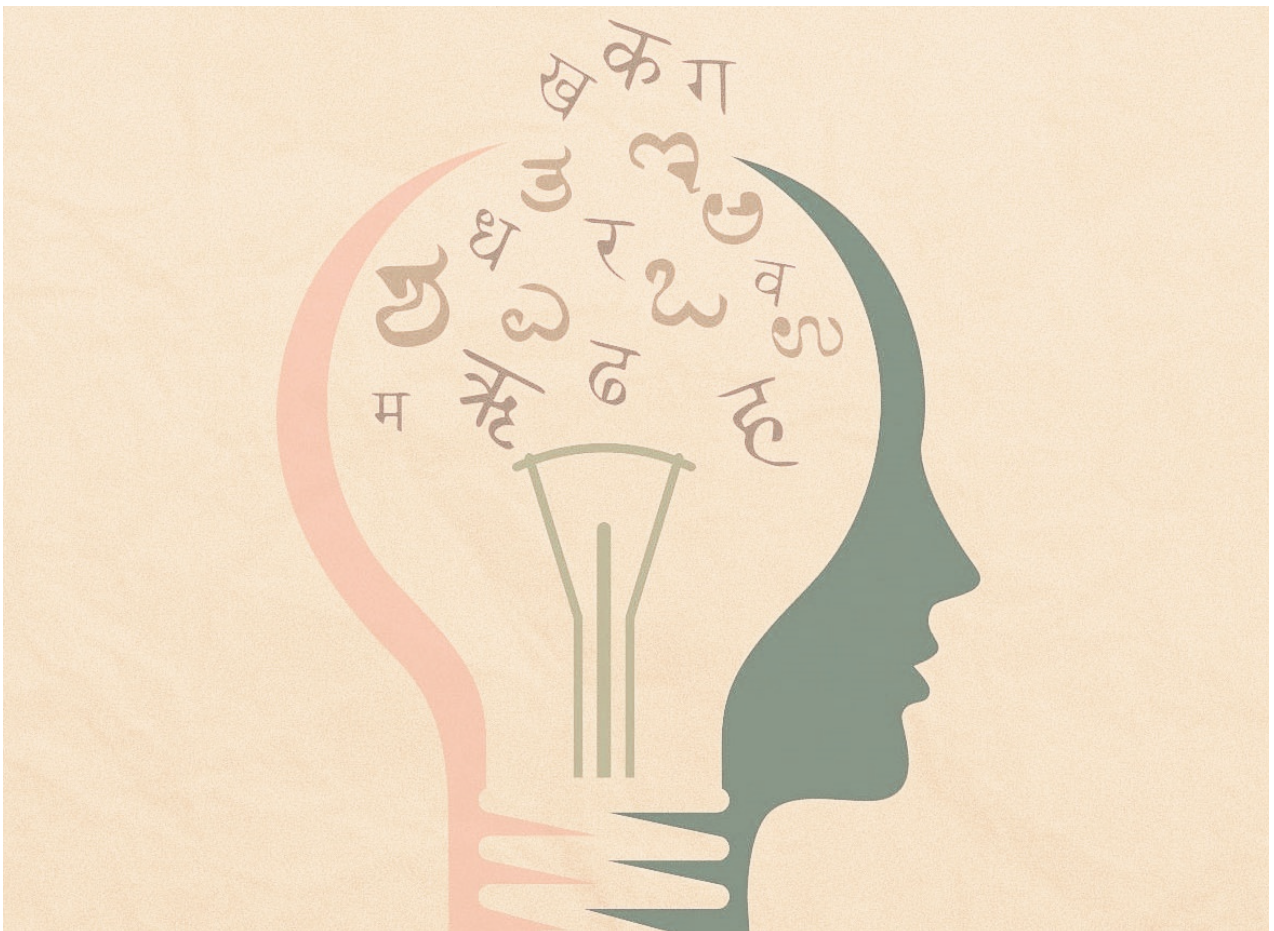
4 Support for NDEAR (National Digital Education Architecture).

UDISE+

NDEAR | National Digital Education Architecture
digital infrastructure for the education ecosystem

Appointment of Language Teacher

- 1** Provision for appointment of Hindi language teachers for the North Eastern States and Non-Hindi speaking states for covering students of Classes I to XII.
- 2** Appointment of Urdu language Teachers.
- 3** Bilingual Books and Teaching Learning Materials
- 4** Continuous Professional Development (CPD) of language Teachers



Focus on Girls Education and Equity: Beti Bachao Beti Padhao

- 1 All Kasturba Gandhi Balika Vidyalayas (KGBVs) to be upgraded to class XII.
- 2 Enhanced financial support for existing Stand-alone Girls' Hostels for classes IX to XII (KGBV Type IV) of up to Rs 40 lakh per annum.
- 3 Training for inculcating self-defense skills in girls under 'Rani Laxmibai Atma Raksha Prashikshan' and amount increased from Rs 3000 to Rs 5000 per month.
- 4 Provision of Incinerator and sanitary pad vending machines in all girls' hostels.
- 5 Preference to Socio-Economic Disadvantaged Groups (SEDGs), Educationally Backward Blocks (EBBs), LWE affected districts, Special Focus Districts (SFDs), Border areas and the 113 aspirational districts identified by Niti Aayog



Inclusive Education

1 Provision of Annual Identification Camps for Children with Special Needs (CWSN) at block level

3 Separate provision of stipend for CWSN girls @ Rs. 200 per month for 10 months



2 Provision of student-centric component of Rs. 3500 per annum for CWSN from pre-primary to senior secondary level

4 Equipping of Block Resource Centres for rehabilitation and special training of CWSN, and teachers.

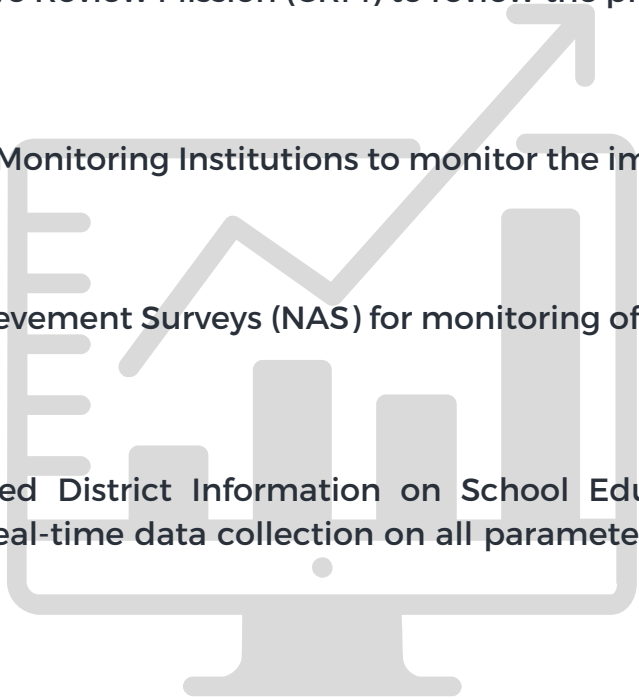
Vocational Education

- 1** Provision for exposure of Vocational Education to Upper Primary students in Government and Government Aided schools
- 2** Support for Vocational Education extended to Government Aided schools and grant/number of job roles/sections linked to enrolment and demand at secondary level.



- 3** Provision of Classroom cum workshop for Vocational Education in schools serving as Hub for other schools in the neighbourhood. Provision of transport and assessment cost for schools serving as spokes.
- 4** Convergence with the Ministry of Skill Development and Entrepreneurship and other agencies providing funding for Skills.
- 5** The existing infrastructure of schools and ITIs and Polytechnics will be used to ensure optimum utilization of the facilities, both for school-going children and out of school children.

Review and Monitoring

- 1** Child Tracking to monitor learning levels and enrolment
 - 2** Social Audit covering at least 20% of schools per year involving youth volunteers, undergraduate students etc.
 - 3** Comprehensive Review Mission (CRM) to review the progress.
 - 4** Independent Monitoring Institutions to monitor the implementation.
 - 5** National Achievement Surveys (NAS) for monitoring of learning outcomes.
 - 6** UDISE+ (Unified District Information on School Education+) to ensure reliable and real-time data collection on all parameters relating to school education
 - 7** Performance Grading Index (PGI) to grade all States and UTs on their performance across 70 indicators has been extended to District level
- 

Convergence with other schemes

- 1** PM POSHAN scheme for providing one hot cooked meal to children upto elementary stage.
- 2** Integrated Child Development Scheme (ICDS) of the Ministry of Women & Child Development for ECCE.
- 3** National Rural Drinking Water Programme under the Ministry of Jal Shakti for providing drinking water facilities in schools.
- 4** National Child Labour Project (NCLP) of the Ministry of Labour for mainstreaming into regular schools of all children withdrawn from child labour.
- 5** Convergence with the Ministry of Skill Development and Entrepreneurship and other Ministries providing funding for skills.
- 6** Ministry of Social Justice & Empowerment and Ministry of Tribal Affairs for providing residential facilities for SC and ST children.
- 7** Scheme of Assistance to Disabled Persons for Purchase/Fitting of Aids/ Appliances (ADIP Scheme) and Scheme for Implementation of Persons with Disabilities Act, 1995 (SIPDA) of Ministry of Social Justice and Empowerment.
- 8** School Health Programme (SHP) under Ayushman Bharat, a joint initiative of the Ministry of Health & Family Welfare and the Ministry of Education.
- 9** Convergence with Department of Rural Development for provision of playgrounds, boundary walls in schools, and provision of school uniforms through Self Help Groups.
- 10** Convergence with Department of Panchayati Raj for use of 15th Finance Commission funds for maintenance of school premises as required locally.

What's new?

Major recommendations of NEP 2020 included in revamped Samagra Shiksha.



New/Upgraded schools from Pre-primary to Class 12th



All new schools/hostels, to have provision of rain water harvesting system, solar panel and, barrier free access



Expansion of Residential Hostels, KGBVs etc. upto senior secondary level **(NEP Para No. 3.2 & 6.9)**



Support for Out of School Children in age group of 16-19 years **(NEP Para No. 3.1)**



Extension of Transport facility upto secondary level **(NEP Para No. 6.4)**



Support for pre-primary sections in Government primary schools **(NEP Para No.1.4 & 1.6)**



Training of Master Trainers for training of Anganwadi workers and In-service teacher training for ECCE teachers.



Teaching Learning Materials, indigenous toys and games, play based activities per annum for pre-primary sections in Government Schools.

What's new?

Major recommendations of NEP 2020 included in revamped Samagra Shiksha.



3-month play-based-school readiness/ preparation module - for all students who enter Grade 1 (**NEP Para 2.5**)



Emphasis on Foundational Literacy and Numeracy through NIPUN Bharat Mission (**NEP Para No. 2.1 to 2.8**)



Specific training modules under NISHTHA by NCERT to train Primary teachers on foundational Literacy and Numeracy.



Provision for Holistic Progress Card (HPC) (**NEP Para No. 4.35**)



A national repository of high-quality resources on foundational literacy and numeracy will be made available on the Digital Infrastructure for Knowledge Sharing (DIKSHA) (**NEP Para 2.6**)



E-content will be prepared and uploaded on DIKSHA for Mathematics and Reading Literacy for FLN in local languages and context by SCERTs.



Introduction of child tracking for tracking learning outcomes as well as transition of children (**NEP Para No. 3.3**)



Learning Enhancement/Enrichment Programme focusing on academic enrichment beyond classrooms including Topic-centered and Project-based Clubs and Circles.

What's new?

Major recommendations of NEP 2020 included in revamped Samagra Shiksha.



Topic-centered and Project-based Clubs and Circles, both in online as well as offline mode. (Examples include Science Circles, Math Circles, Music & Dance Performance Circles, Chess Circles, Poetry Circles, Language Circles, Drama Circles, Debate Circles, Sports Circles, Eco-Clubs, Health & Well-being Clubs/ Yoga Clubs and so on.)



School libraries will be used to serve the community during non-school hours to promote widespread reading.



Digital libraries will be established **(NEP para 2.8)**



Effective resourcing and effective governance through School Complex/Clusters/any other innovative mechanism to facilitate the sharing of resources. **(NEP Para 7.5 and 7.7)**



Provision for Bagless days and internships with local craftsman for exposure to vocational. **(NEP Para No. 4.26)**



Provision for in-service teachers training from pre-primary to Class XII.

What's new?

Major recommendations of NEP 2020 included in revamped Samagra Shiksha.



Provision of Capacity building of Teachers (50 Hrs CPD) **(NEP Para No. 5.15)**



Enjoyable and inspirational books for students at all levels will be developed, including through high-quality translation (technology-assisted as needed) in all local and Indian languages.



Provision of Hindi and Urdu Language Teachers **(NEP Para No.22.8)**



The academic support of BRCs and CRCs extended for the pre-primary and Secondary level also.



Enhanced provision for self-defence training for girls



Provision for identification of CWSN and equipping Resource Centre at block level **(NEP Para No. 3.2, 6.10, 6.11, 6.12)**



Provision for the establishment of New SCERT and DIETs in districts created up to 31st March 2020



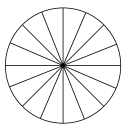
Support for Assessment Cells in SCERT **(NEP Para No. 4.41)**

What's new?

Major recommendations of NEP 2020 included in revamped Samagra Shiksha.



Provision for Smart Classroom and support for DIKSHA (**NEP Para No. 23.6, 24.2 and 24.4 e**)



Provision for Hub and Spoke model in vocational education (**NEP Para No. 16.1 to 16.8**)



Extensive monitoring framework to ensure optimum utilization of funds and effective implementation (**NEP Para No. 8.5, 27.2**)



Support for Social Audit covering 20% of schools per year so that all schools are covered in a period of Five years.



Government of India
Ministry of Education
Department of School Education and Literacy